

Well House, Amsterdam: Steel Beams and CLT Floors

Diederik Dam

Principal Architect, Dam & Partners Architecten



**CTBUH 2022
Steel-Timber Conference**

DAM
&
PARTNERS
ARCHITECTEN

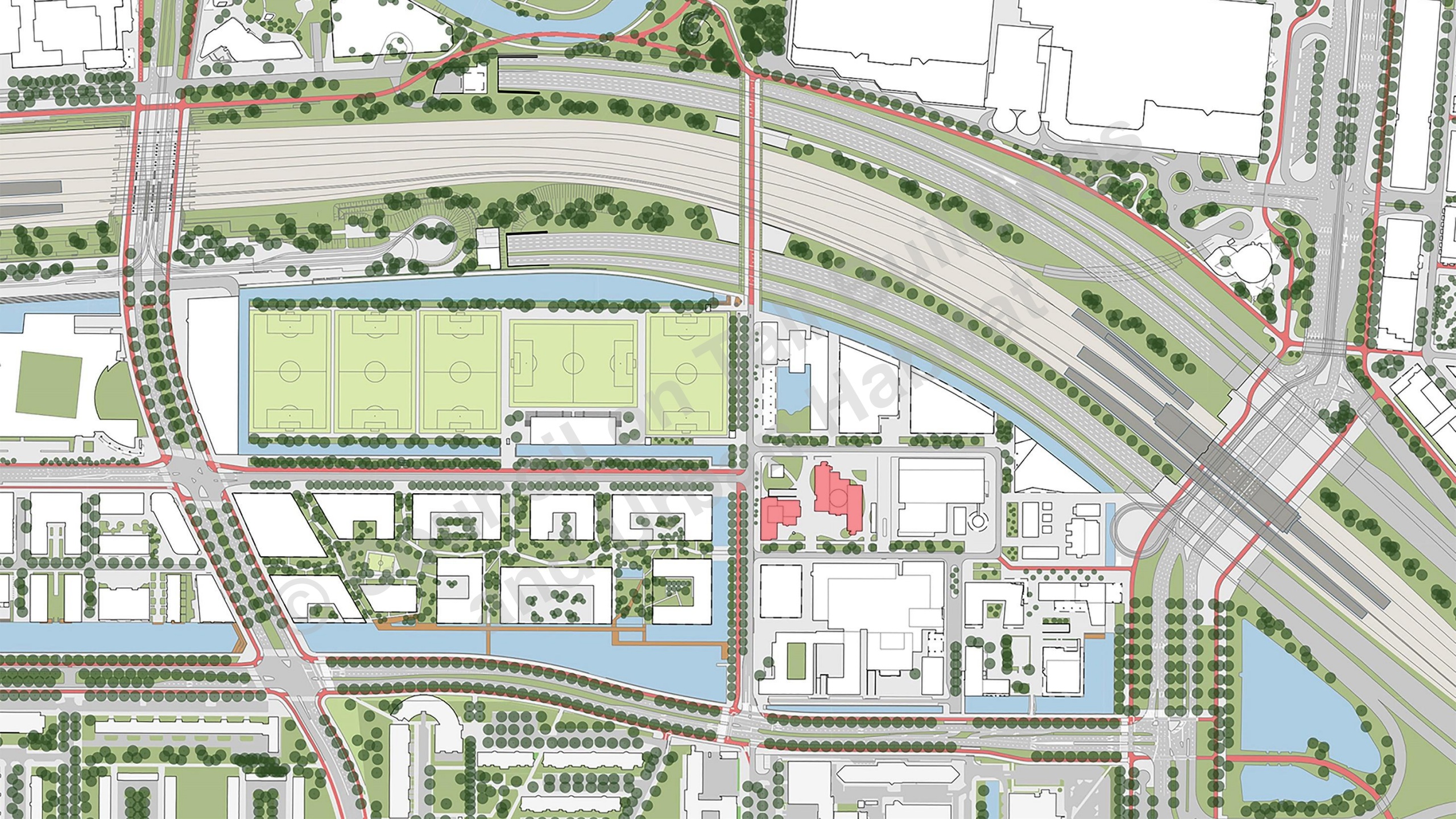
WELL HOUSE

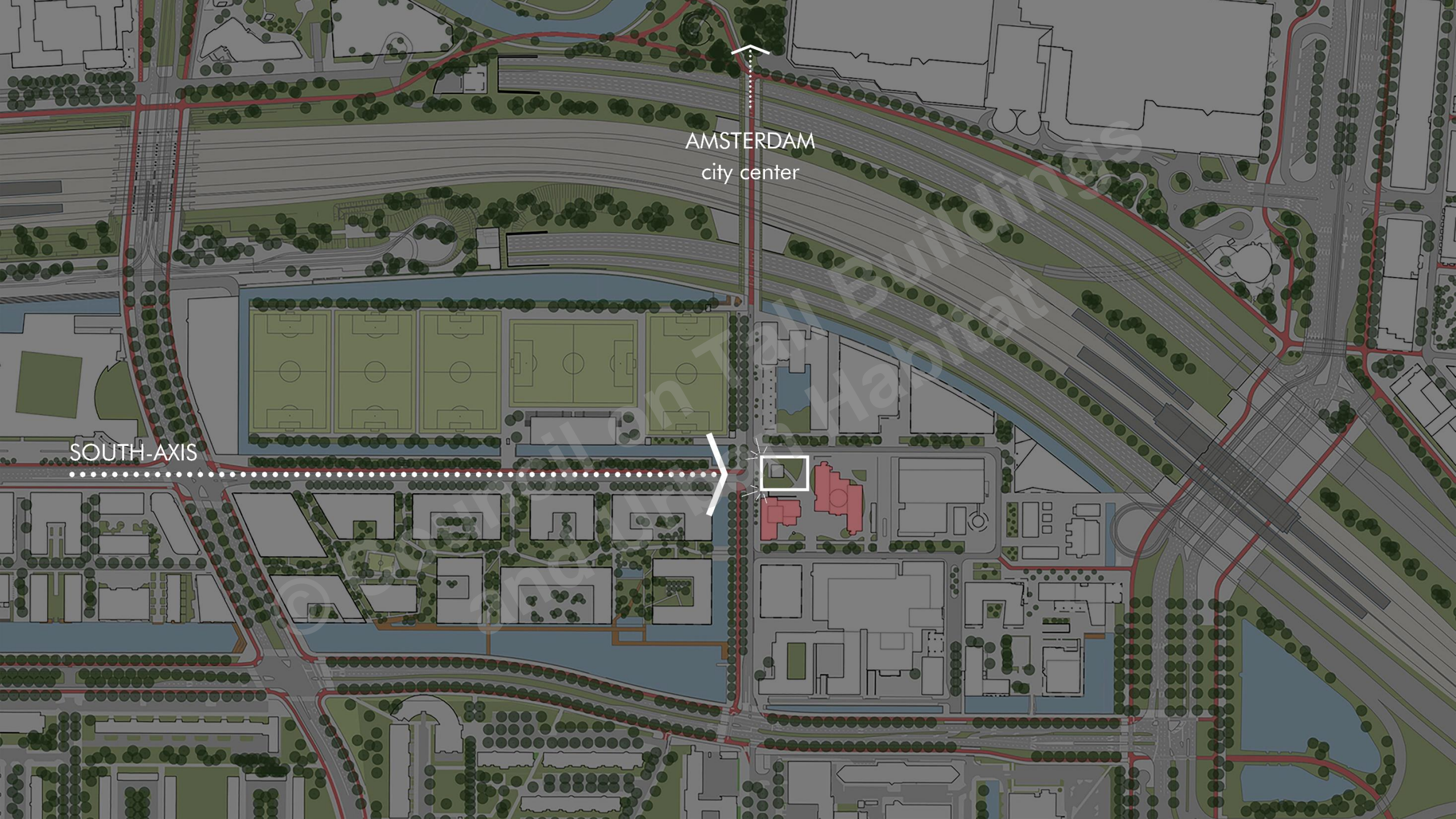
'elegance in honest sustainability'

by Diederik Dam



SOUTH-AXIS
AMSTERDAM





AMSTERDAM
city center

SOUTH-AXIS

00000+P

00000+P

00000+P

00000+P

00000+P

00000+P

00000+P

00000+P

00000+P

00000+P

00000+P

00000+P

00000+P

00000+P

00000+P

00000+P

00000+P

00000+P

00000+P

00000+P

00000+P

00000+P

00000+P

00000+P

00000+P

00000+P

00000+P

00000+P

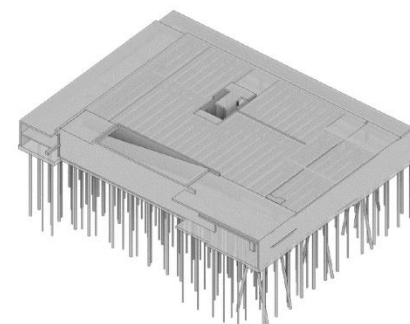
00000+P

00000+P

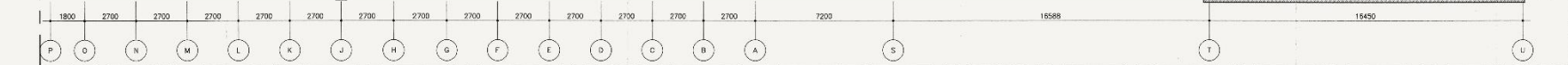
00000+P

00000+P

proposed position
WELL HOUSE



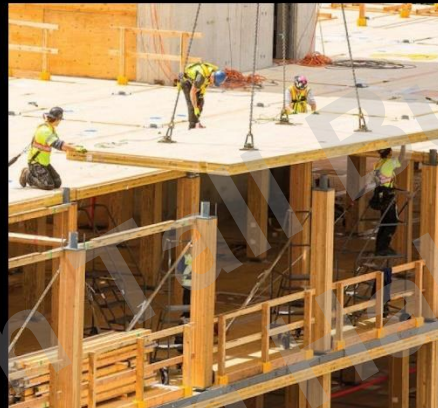
sea level



GEEN ONDERDEEL VERNIEUWBOUW



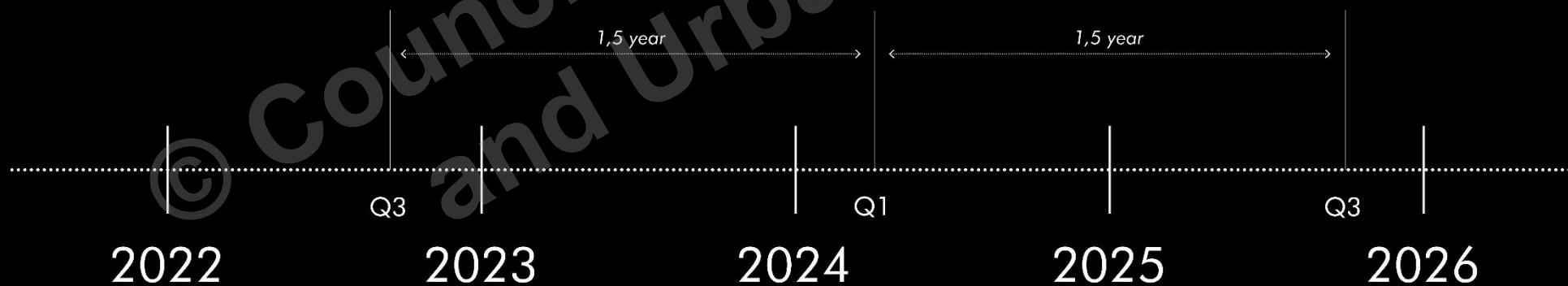
start construction (basement)



start construction (tower)



completion WELL HOUSE

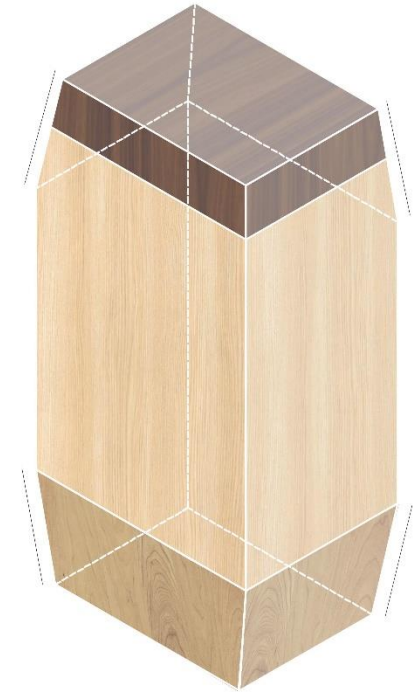




typology & program

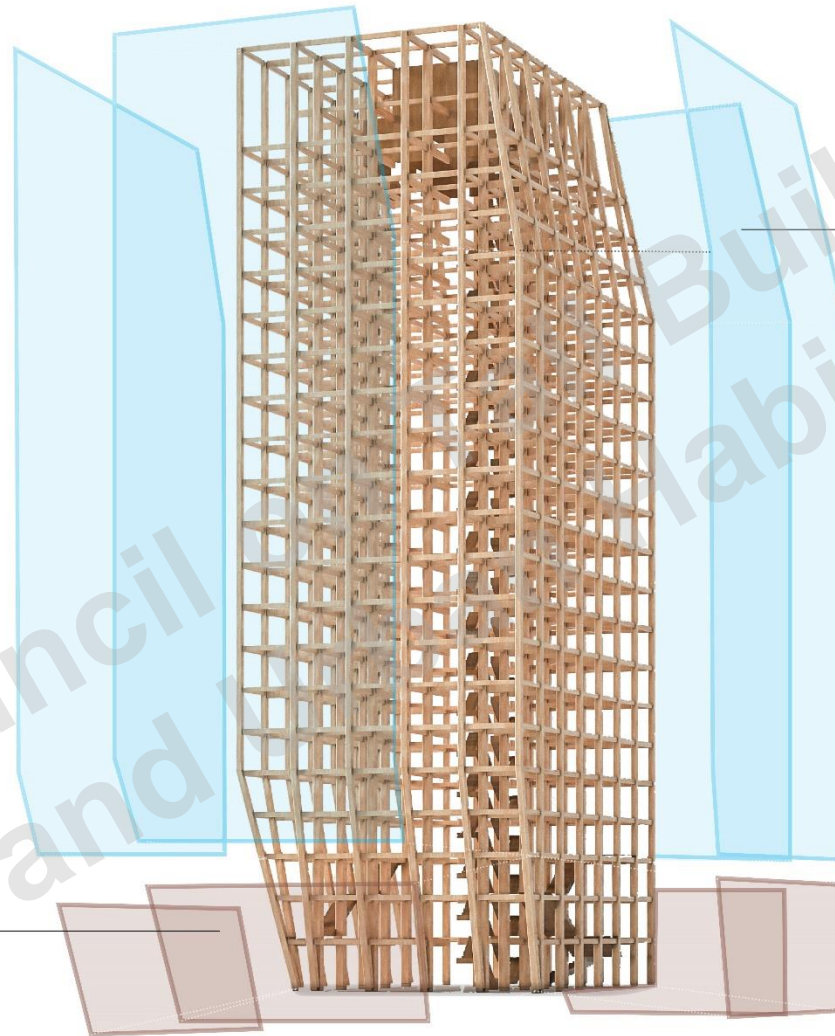


spatial connections



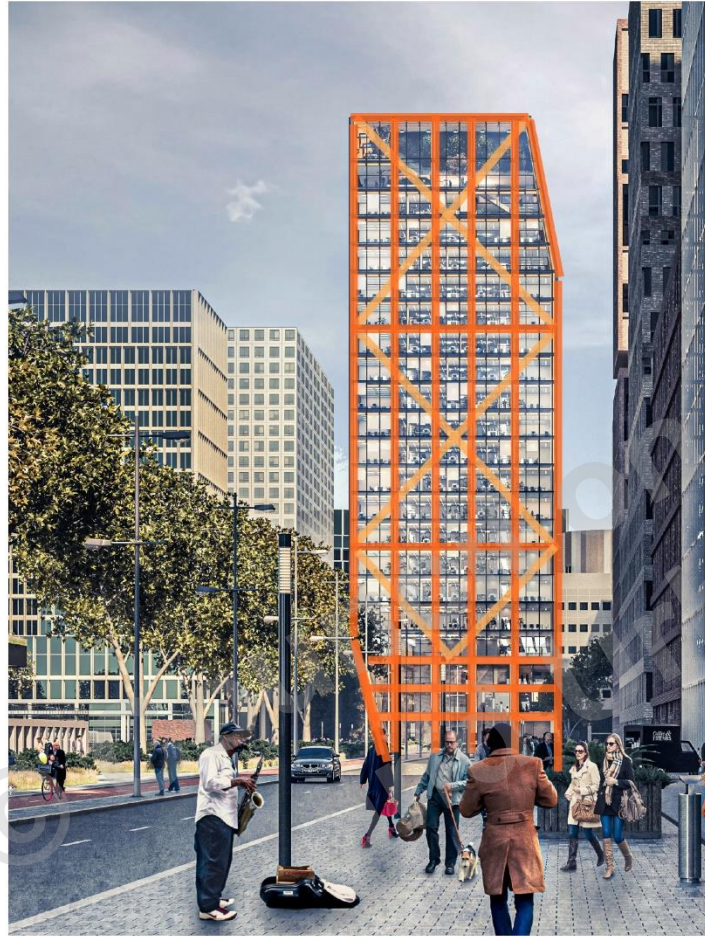
contextual sculpture

timber base
timber becomes a tangible part
of the urban fabric

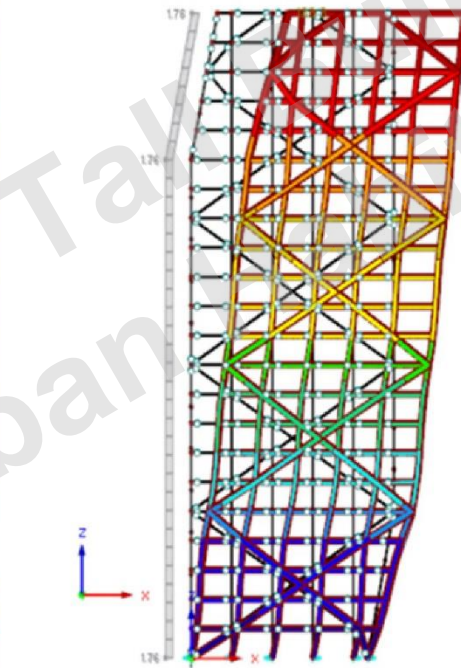


glass skin
low iron glass facade for maximum
transparency

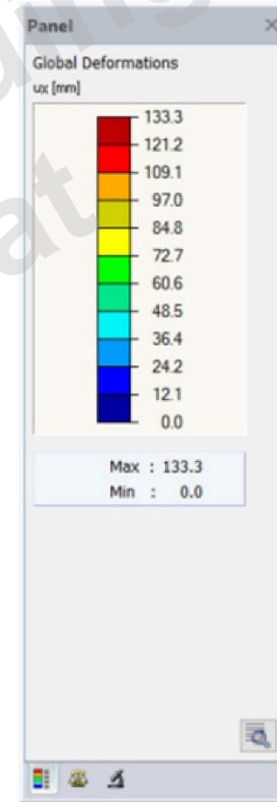




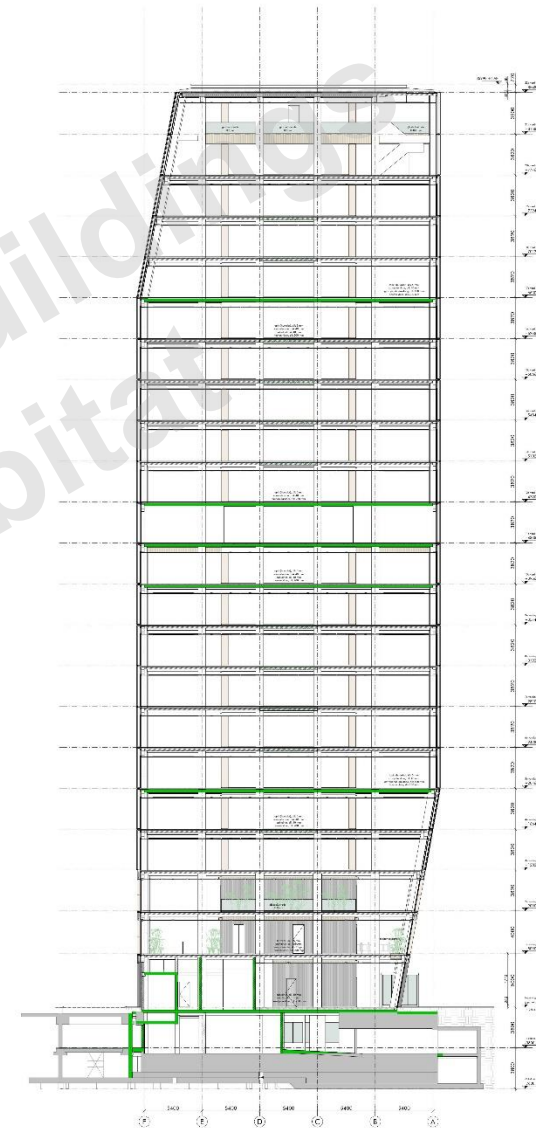
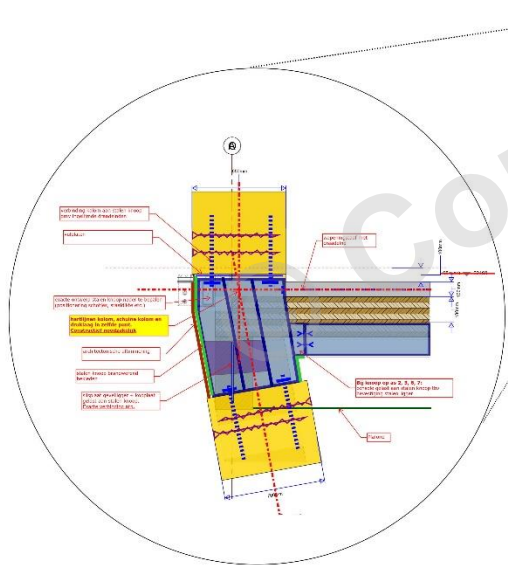
Visibility mode - generated
Global Deformations u-X [mm]
LC2 : Wind L
Loads [kN/m²]



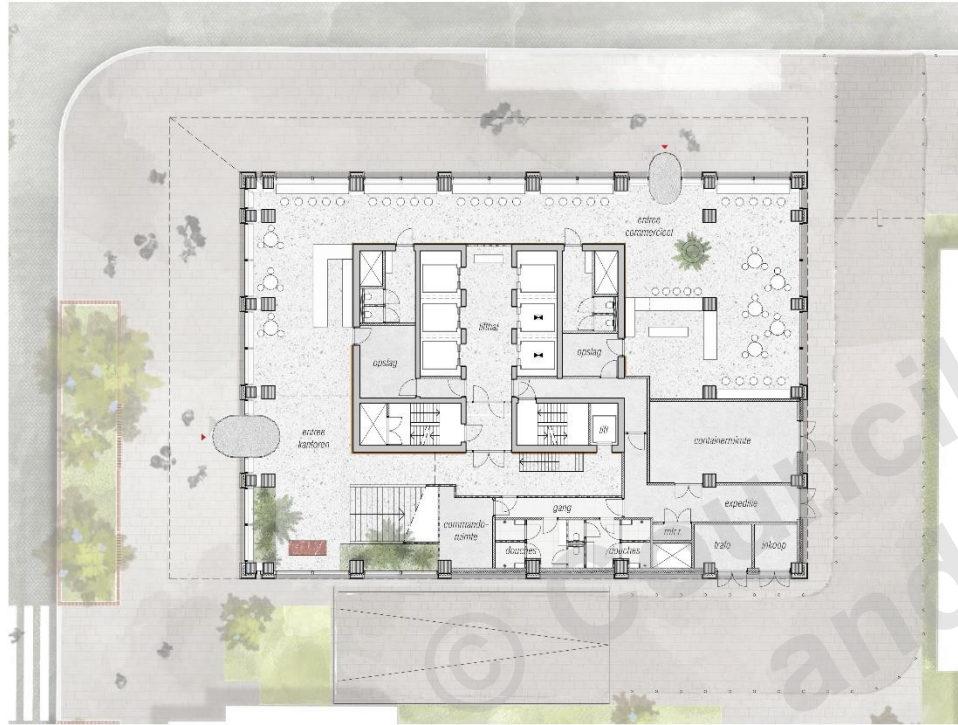
Max u-X: 133.3, Min u-X: 0.0 mm



concrete core
glulam columns & facade beam
steel beams & joints
clt floors



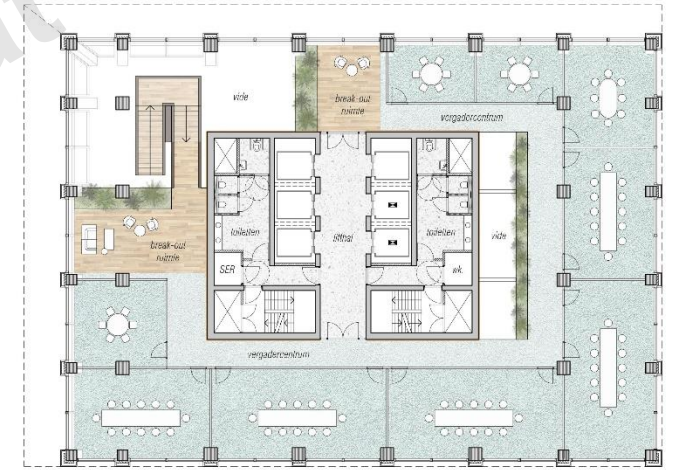




ground floor



first floor



second floor





entrance ground floor

Buildings
Habitat

health and well being

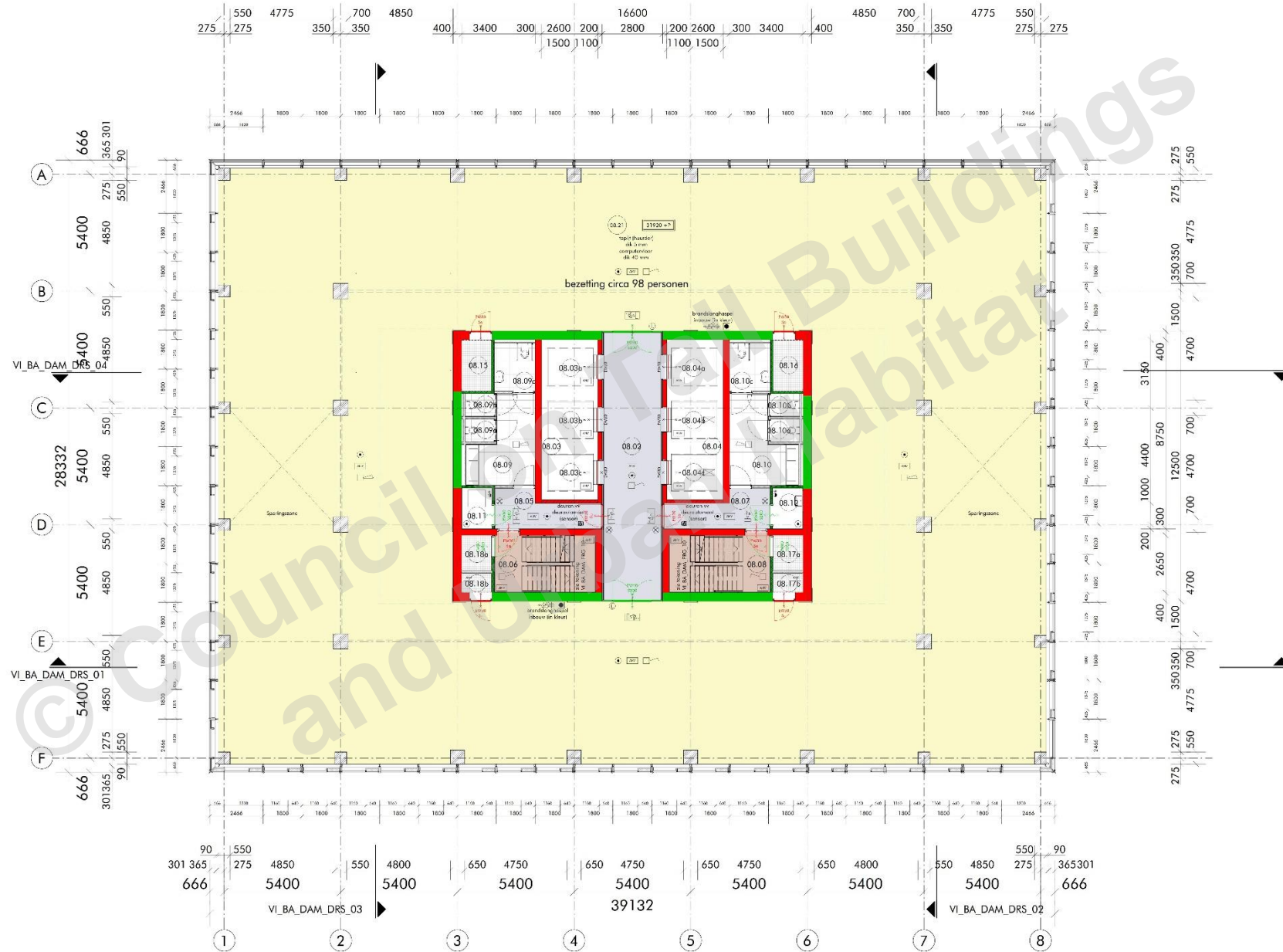
sustainable and natural materials

low carbon & paris proof



roof terrace

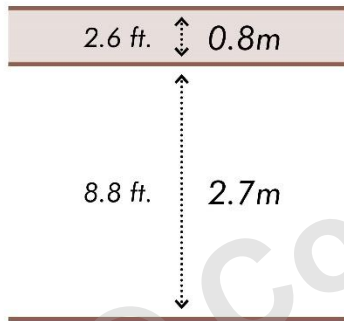
typical floor





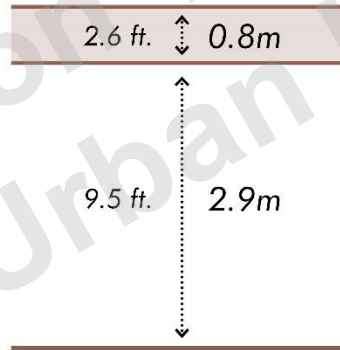
regular office

3.5 meter gross floor height



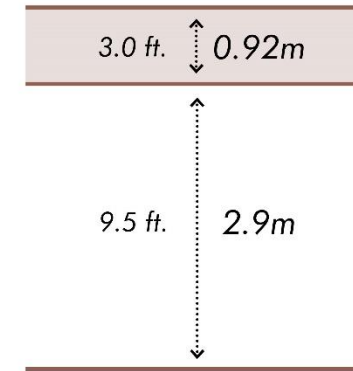
high end office

3.7 meter gross floor height

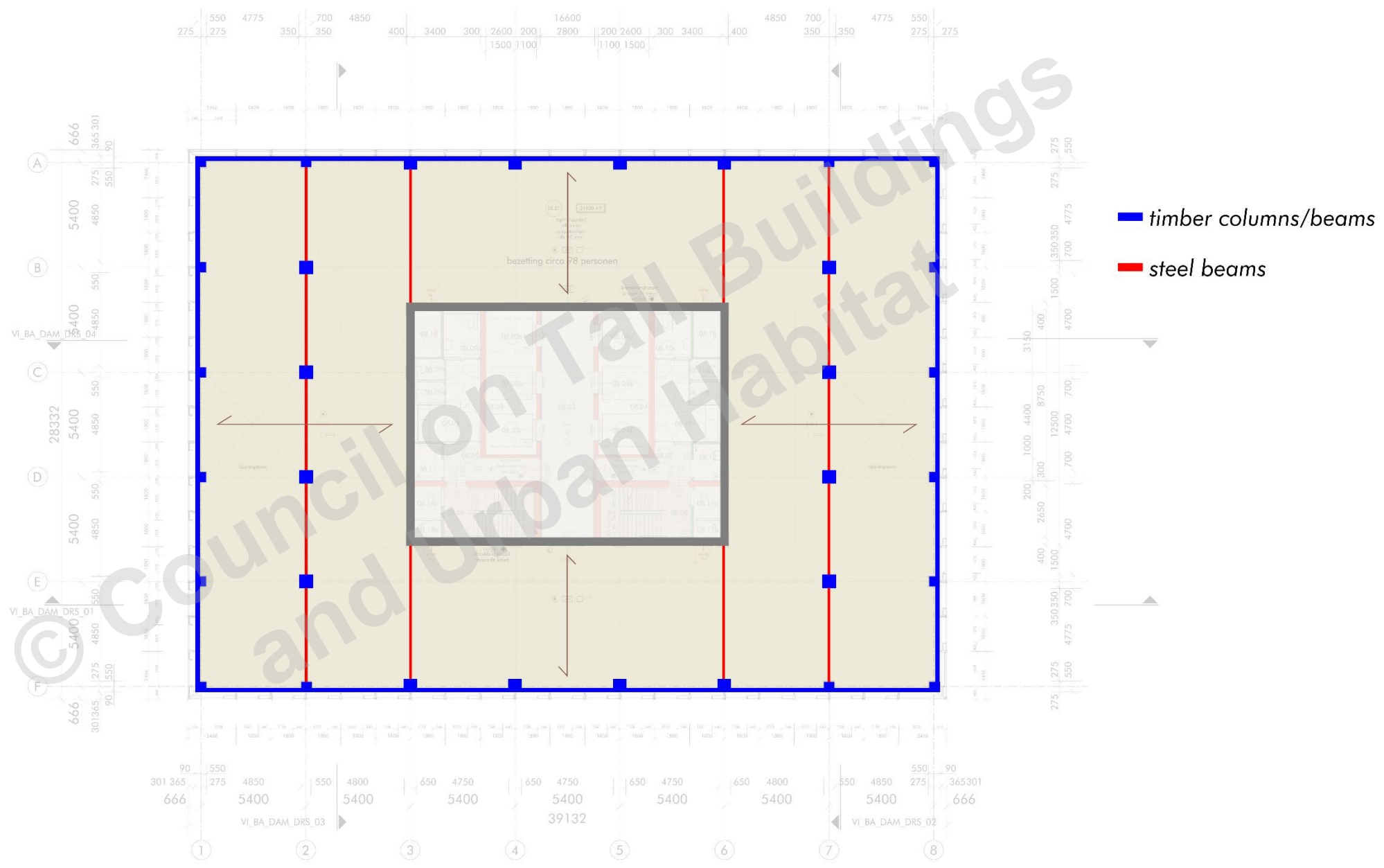


WELL HOUSE

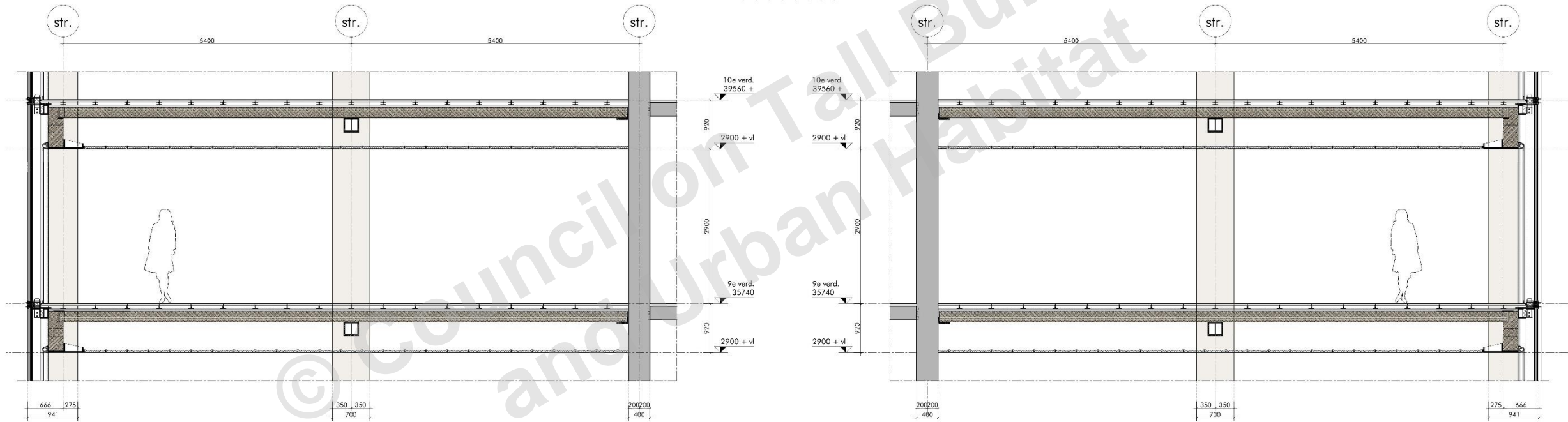
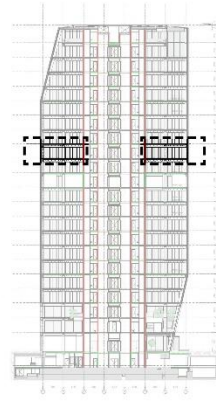
3.82 meter gross floor height



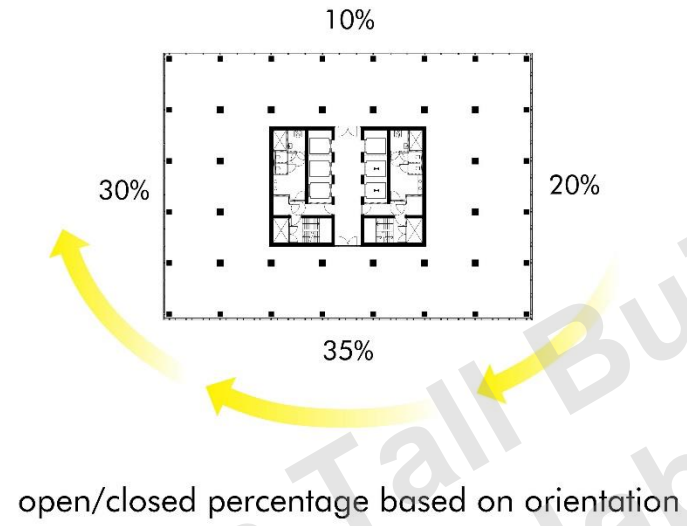
"facade principle and future flexibility"



slim continuous clt floor on steel beam



optimal use of height for facade principle and future flexibility



north



west



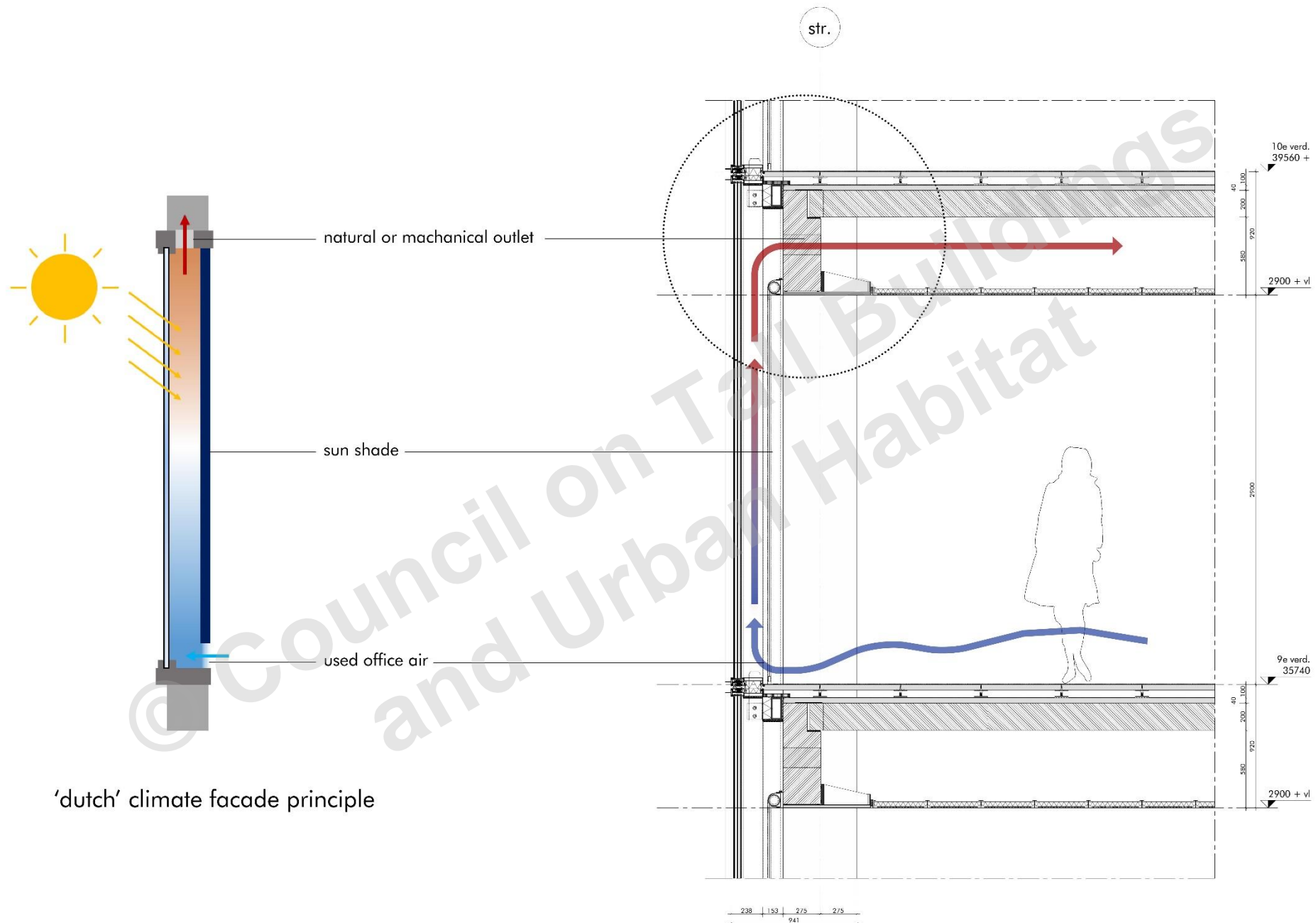
south

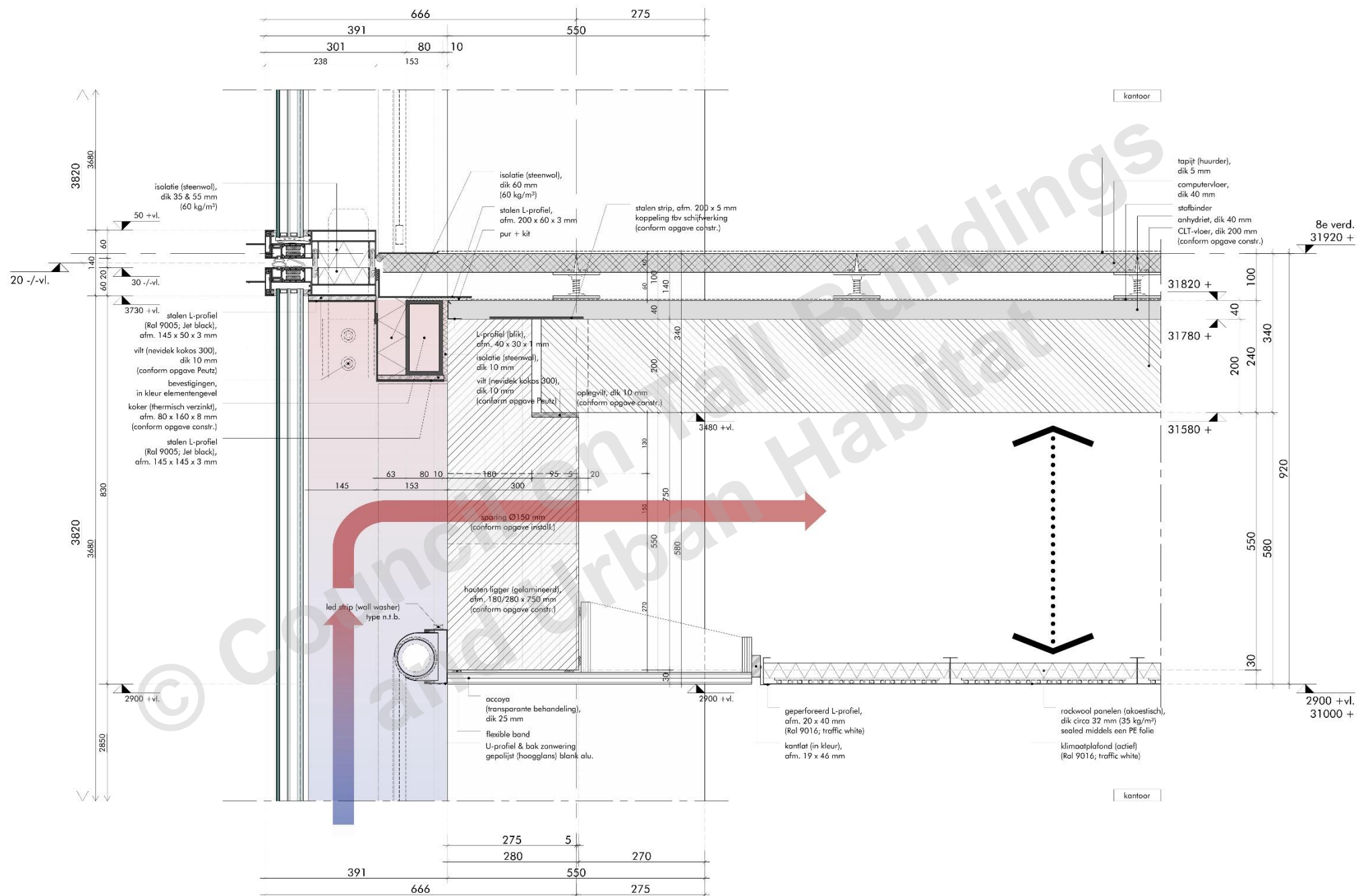


east



facade sample set up







facade fragment (north)



facade fragment (south)

*'elegance in
honest sustainability'*



DAM

&

PARTNERS ARCHITECTEN

in collaboration with

