

Santander Bank, London: Raising Head Heights, Lowering Embodied Carbon

Eddie Jump

Director, Thornton Tomasetti



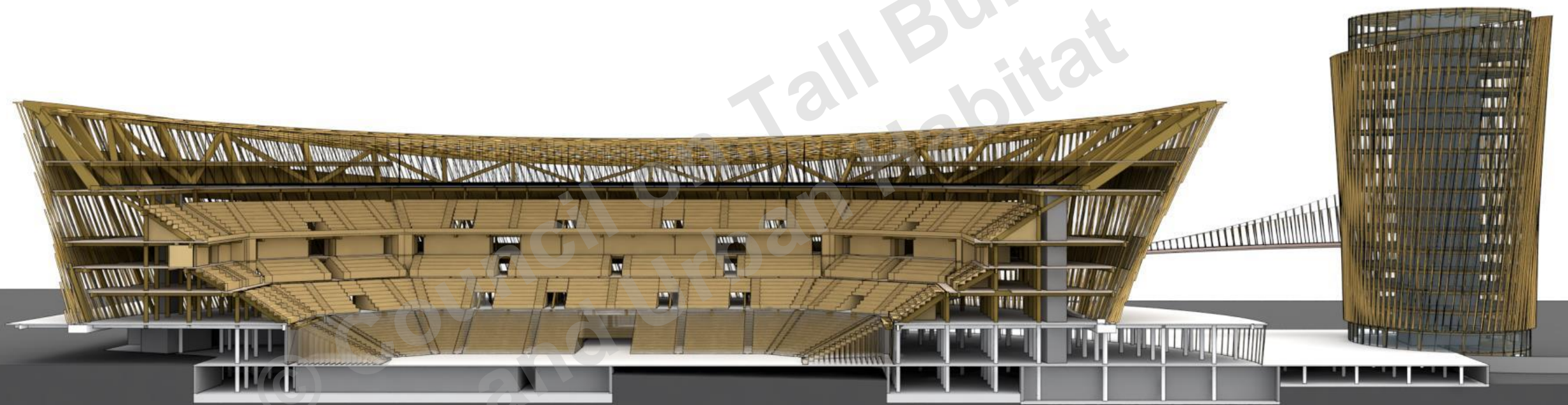
**CTBUH 2022
Steel-Timber Conference**

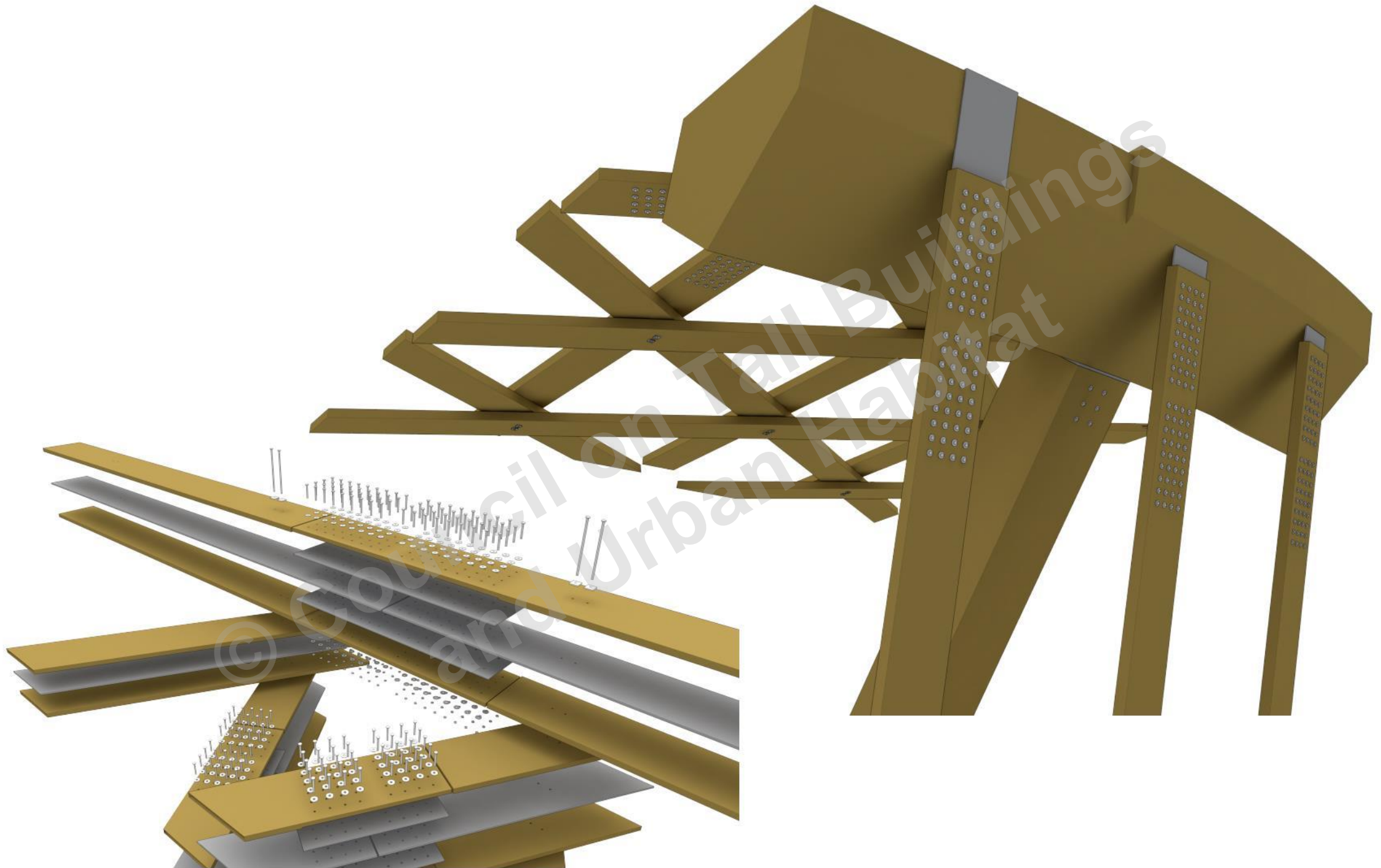
Thornton Tomasetti

TIMBER HYBRID COMPOSITES

W. H. ARENA, VIENNA







NEUBAU SPORTS ARENA, WIEN, GERMANY

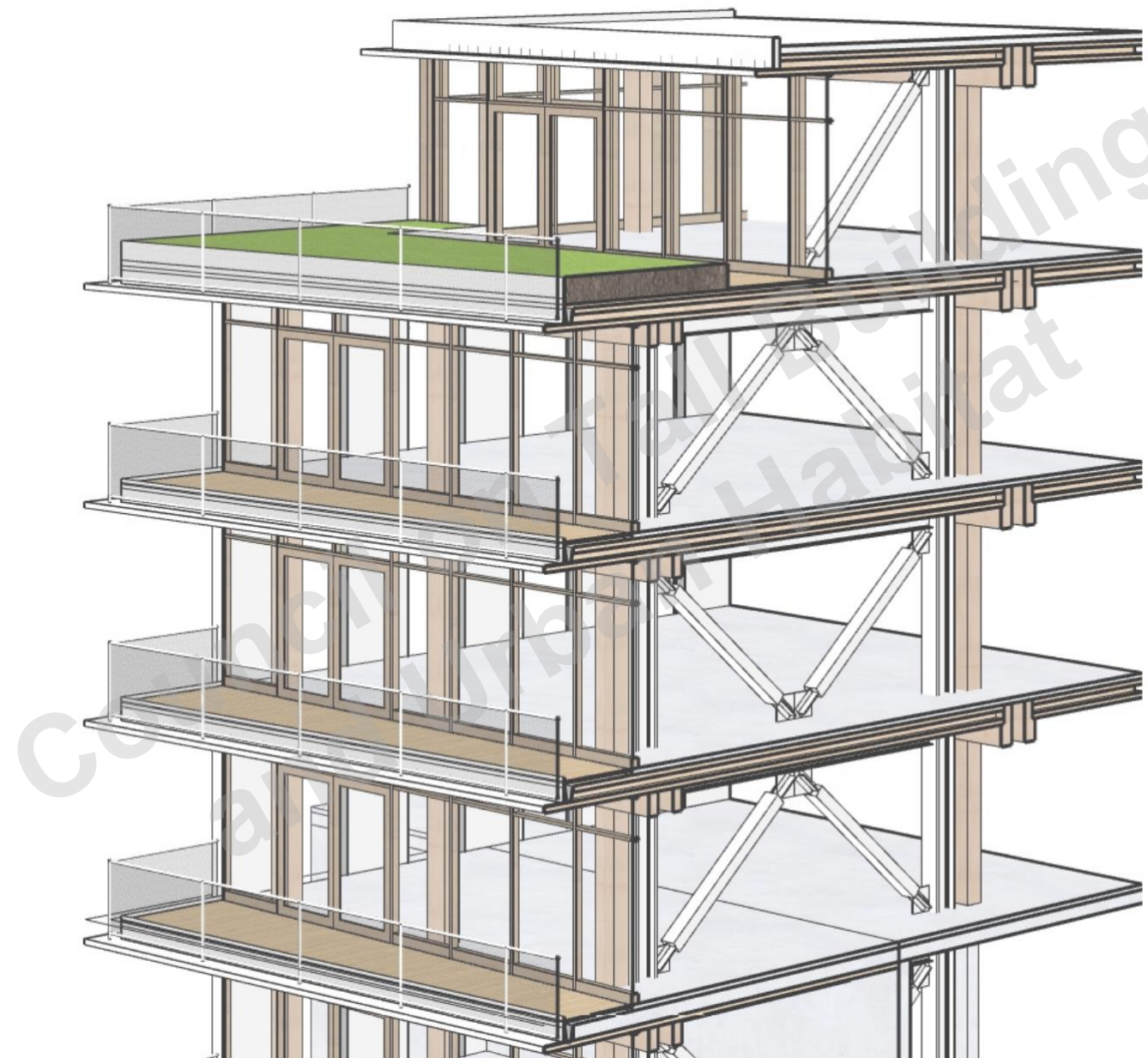




N. MCCADDEN PLACE, LA, USA







TIMBER HYBRID



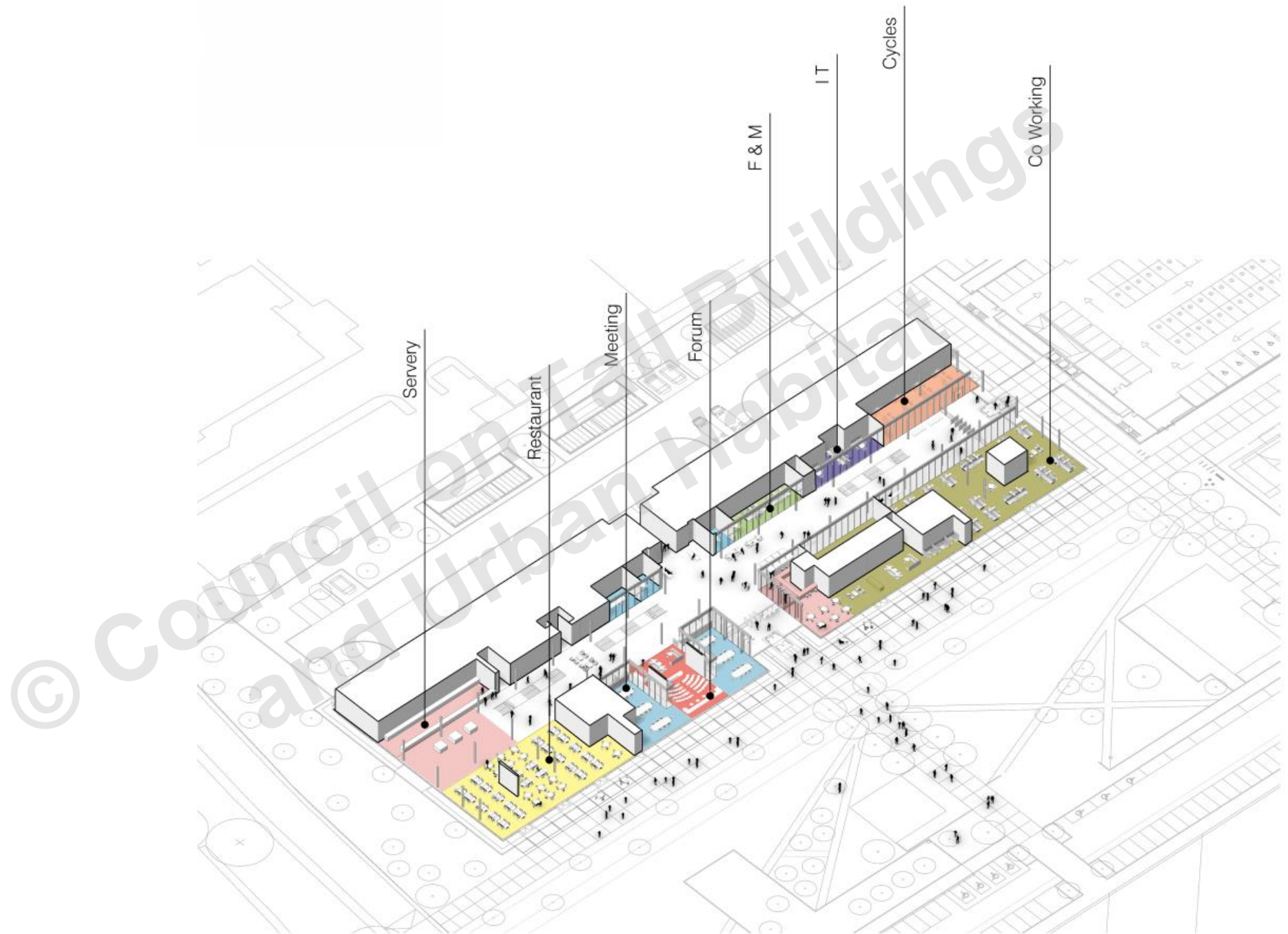
GAME CHANGERS



PROJECT LEIGH, BOTTLE, UK



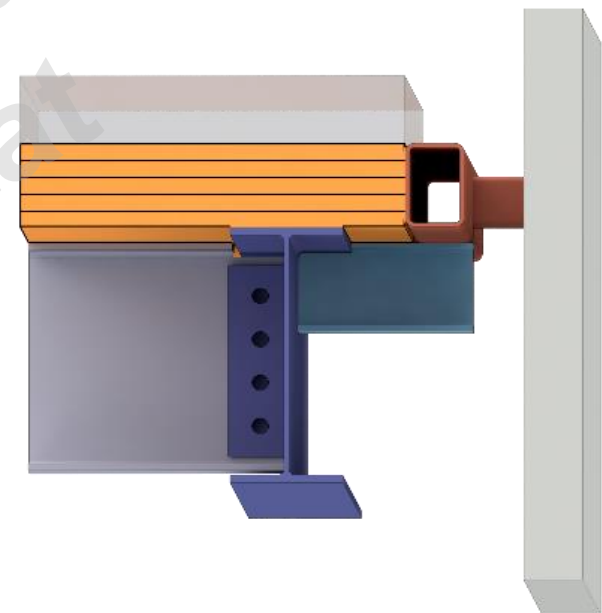






PIT STOP

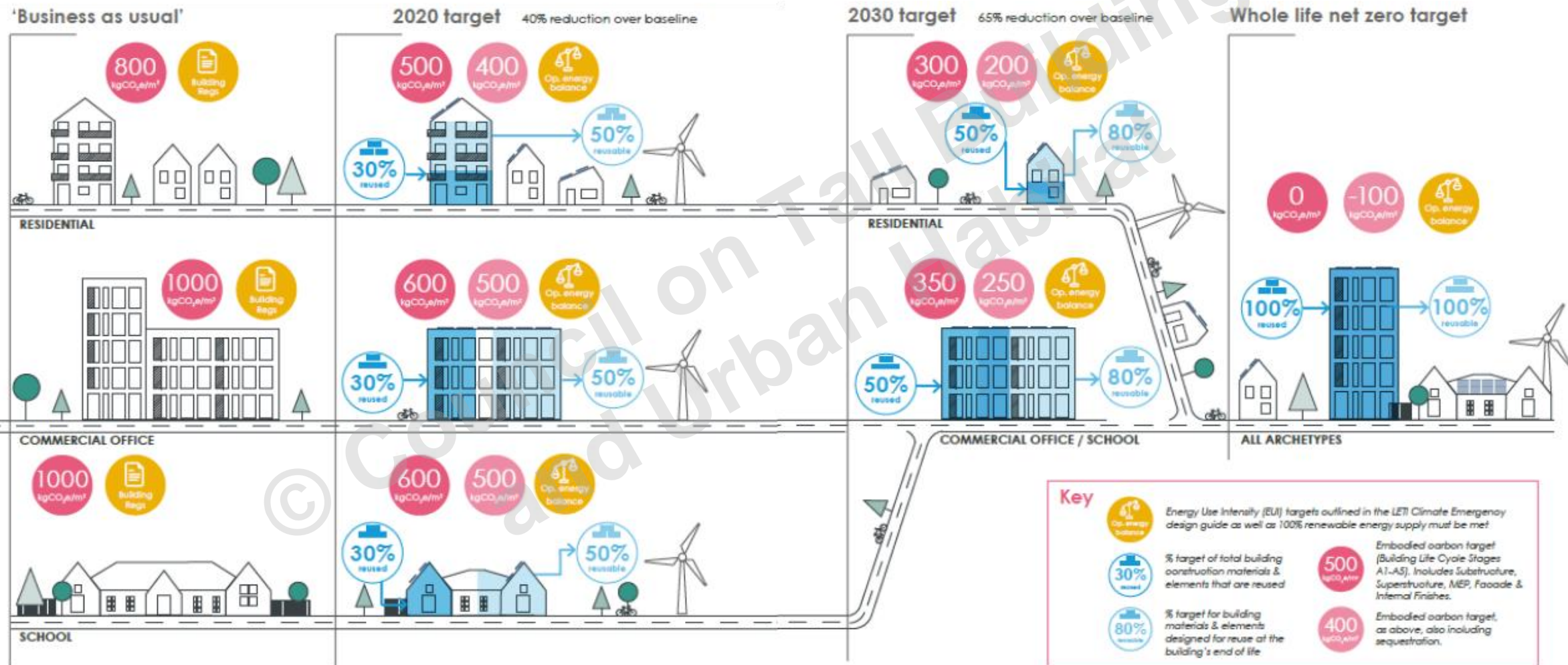






44% OF THE EMBODIED CARBON OF RC FRAME



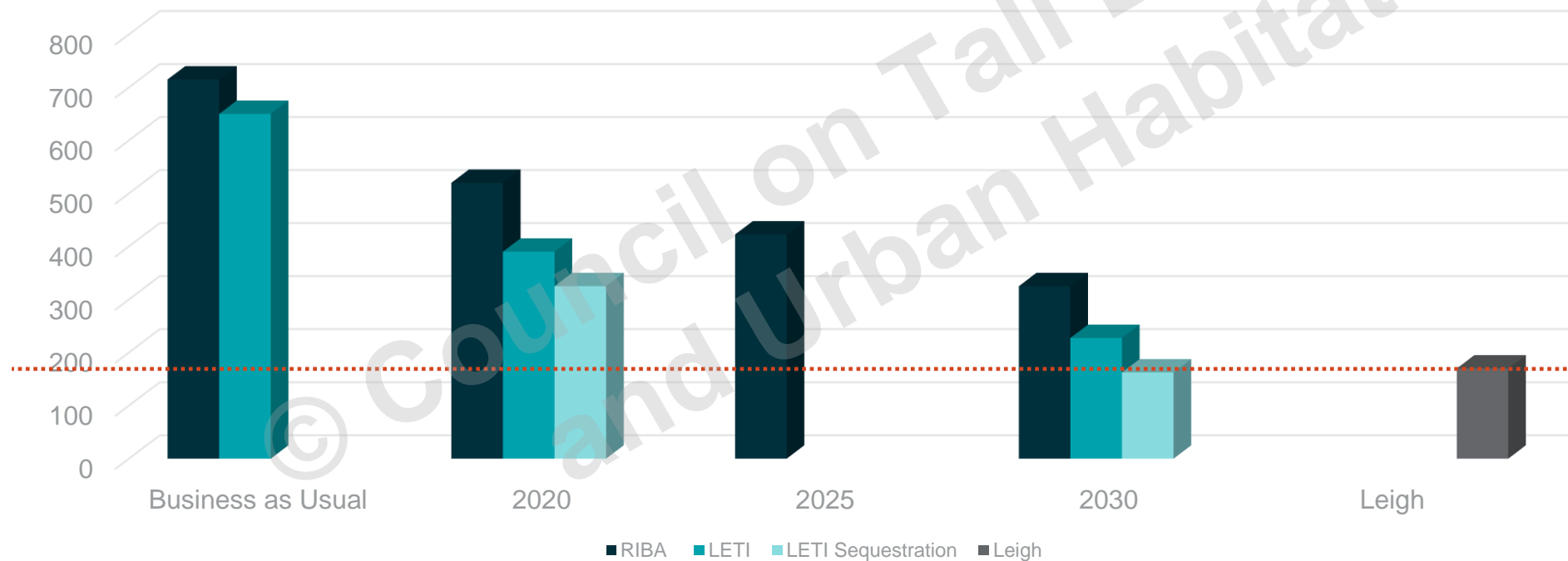


AHEAD OF THE GAME

65%

of total in
substructure and
superstructure

Structural embodied carbon kgCO₂e/m²



Delivering
74%
Below
Business as
Usual
expectations in
2019

NEXT STEP?



NEXT STEP?

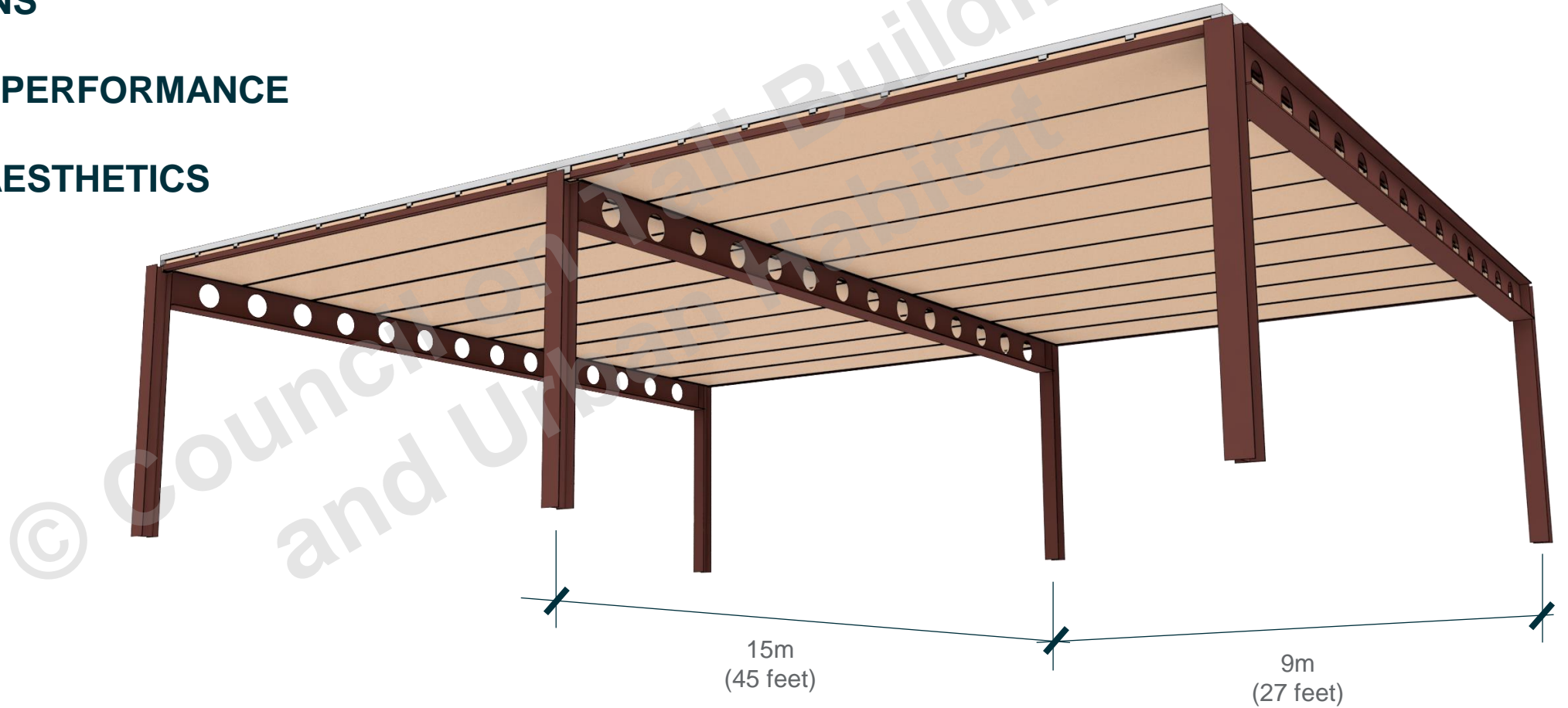


FUTURE



NEXT STEP?

- LONG SPANS
- ACOUSTIC PERFORMANCE
- IMPROVE AESTHETICS



NEXT STEP?



klöckner & co

Thornton Tomasetti

NEXT STEP?



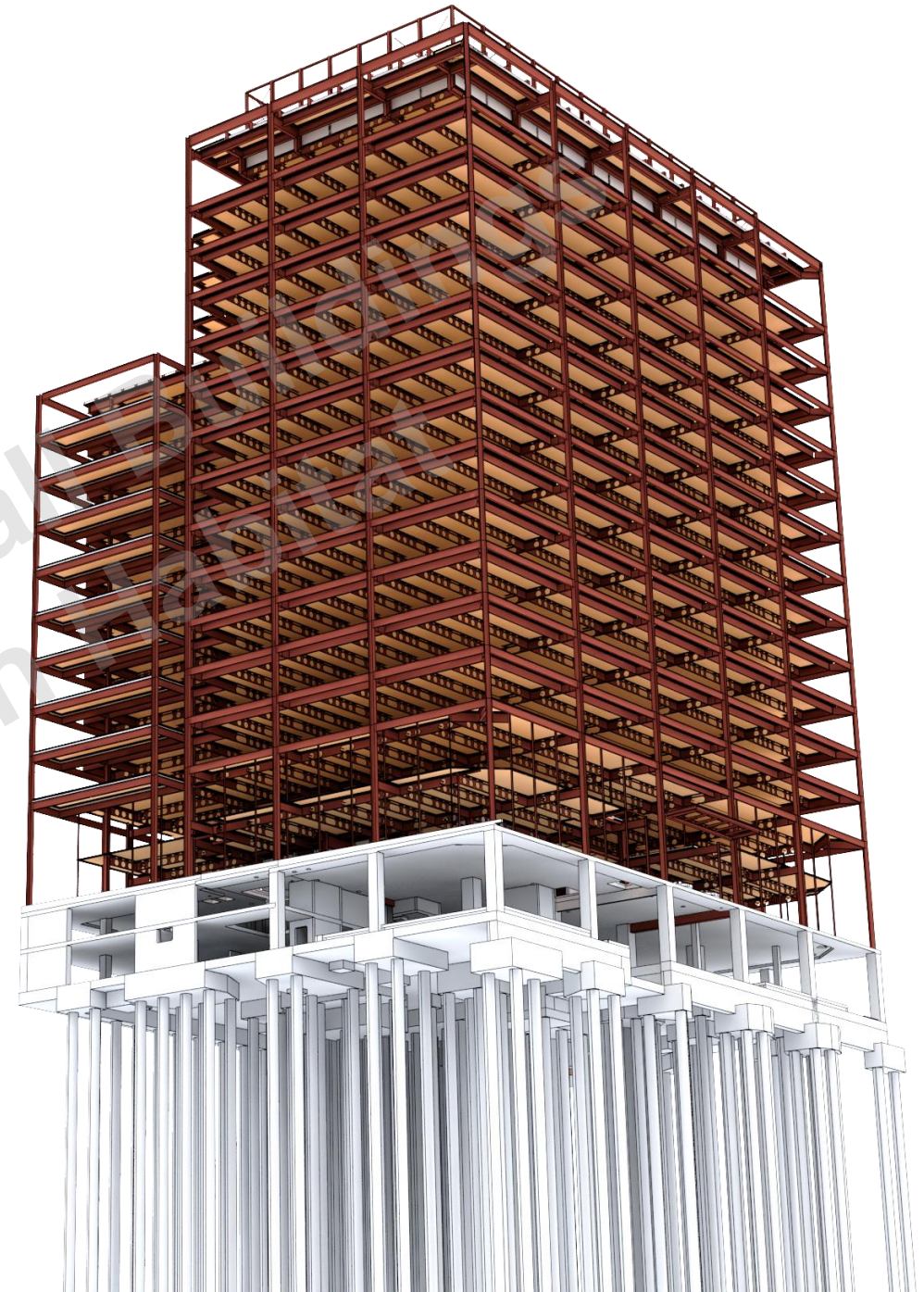
Thornton Tomasetti

-24%

below
LETI Embodied
Carbon targets for
2030

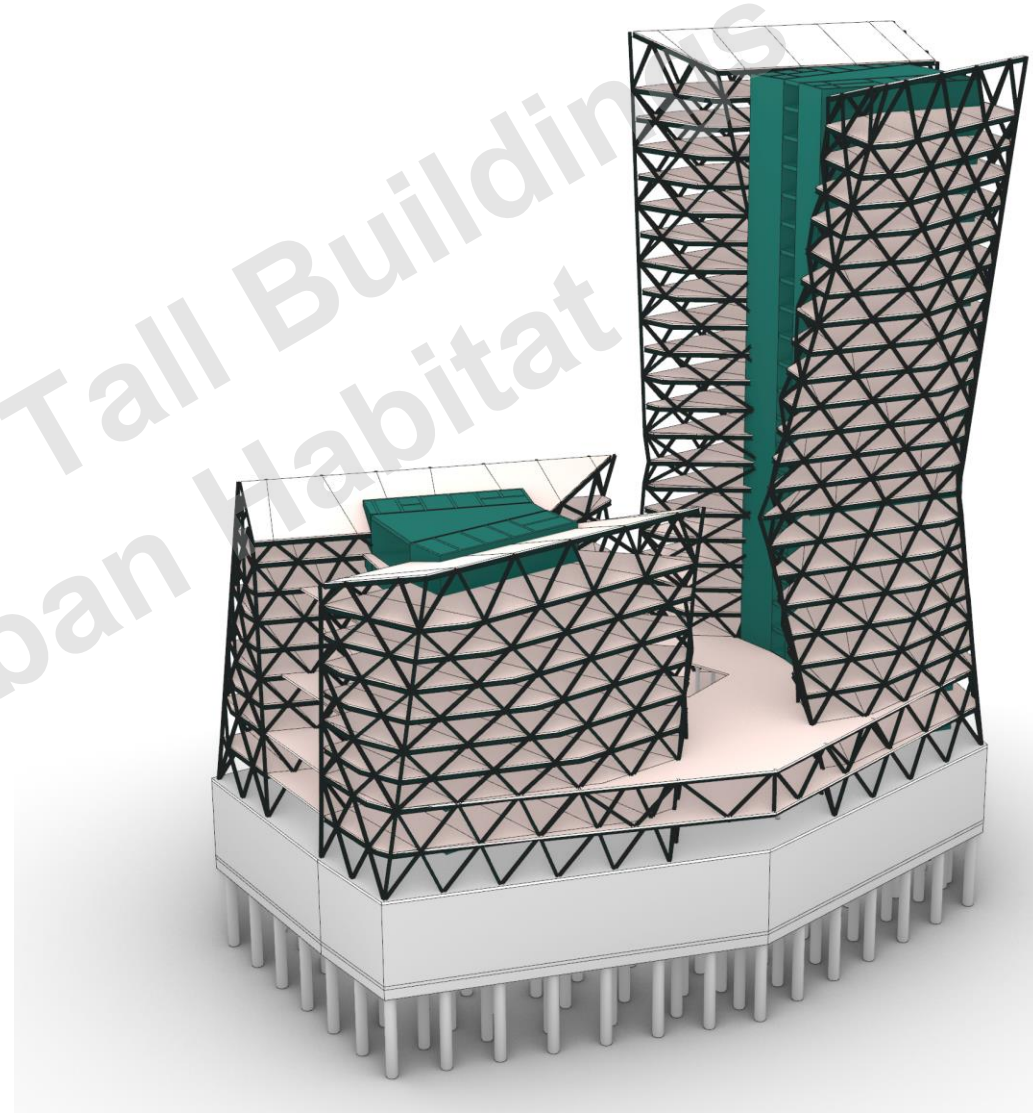
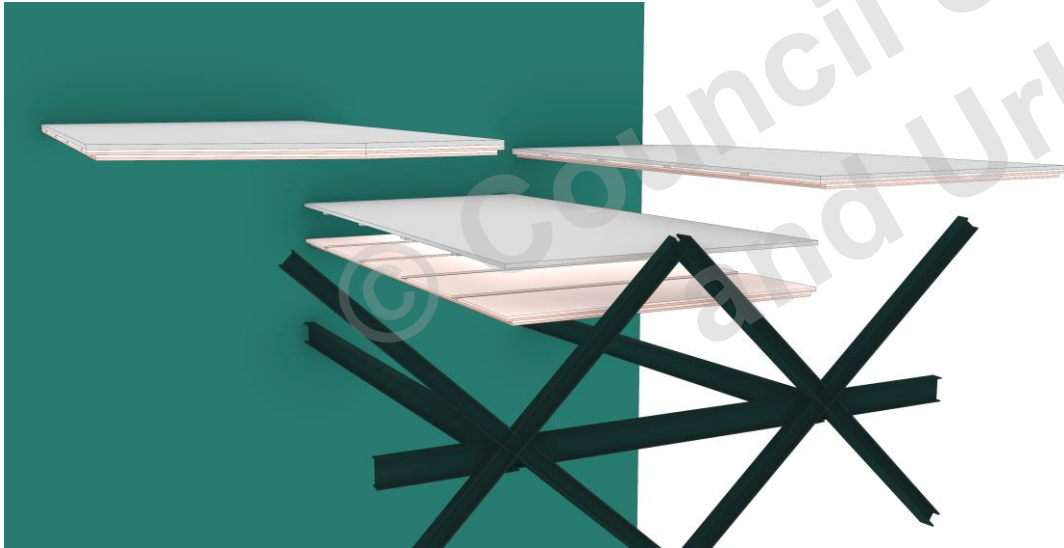
-78%

below LETI Embodied
Carbon Targets for
2030 including
Sequestration



N. R. W. BANK, DUSSELDORF, GERMANY





THANK YOU

Images

St Claire's College, Oxford - View Pictures Ltd.

Rothschild Estate at Waddeston – Chris Honeywell

Project Leigh, Jack Carter Architects

© Council on Tall Buildings
and Urban Habitat