

EDGE Suedkruez, Berlin: Steel Vierendeel Truss Supports Concrete-Timber Construction

Julia Koehler

Senior Structural Consultant, CREE GmbH



**CTBUH 2022
Steel-Timber Conference**



© Council on Tall Buildings
and Urban Habitat

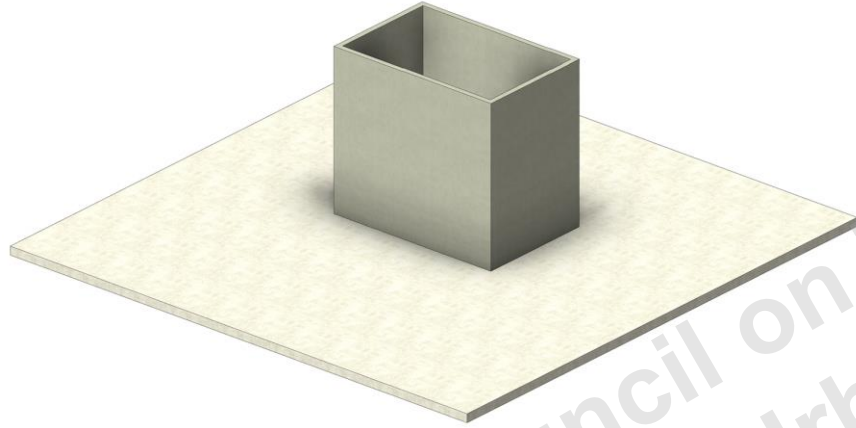
**We are an international
construction collective
for regenerative building
solutions.**



4

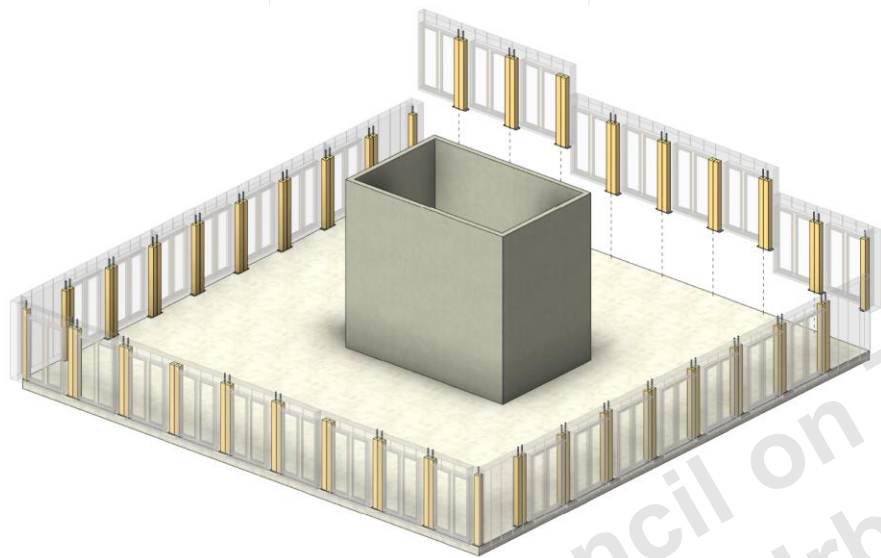
Structural key elements





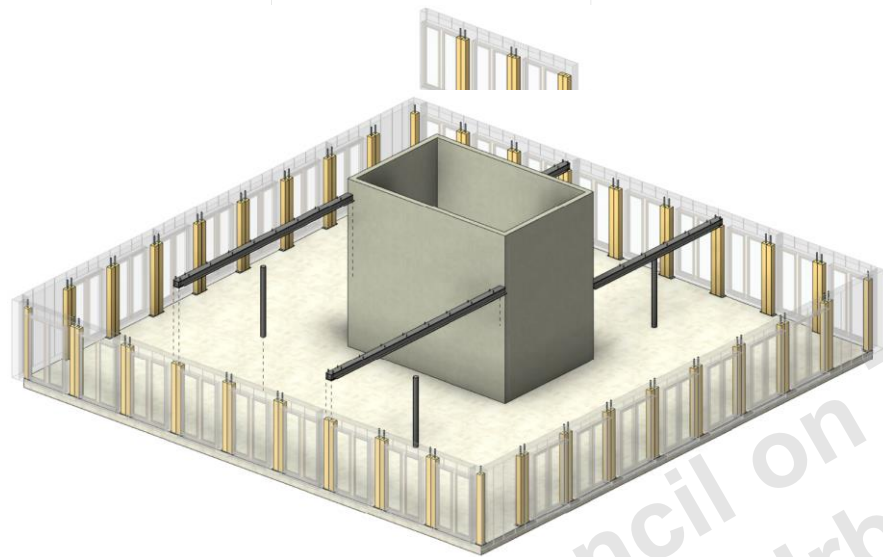
Bracing System





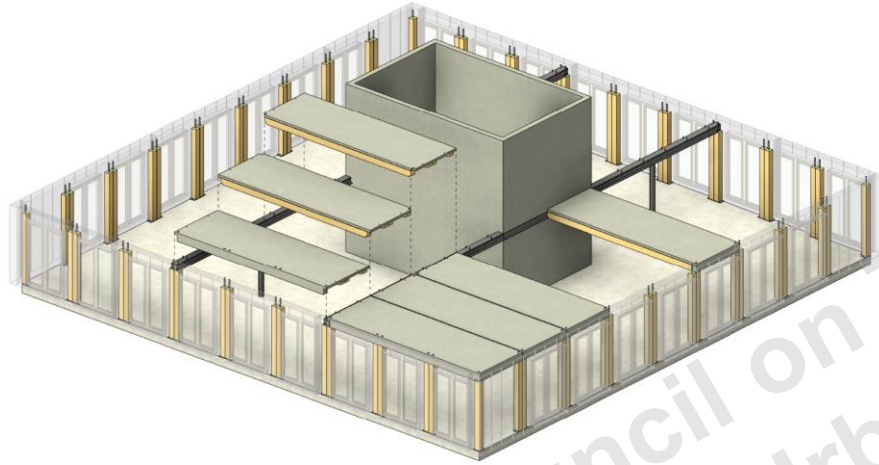
Glulam Columns





Middle Girders



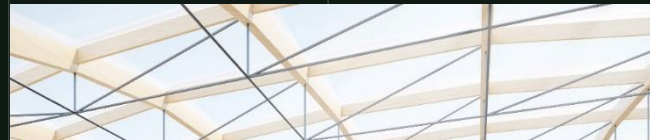


Hybrid Slabs



© Council on Tall Buildings
and Urban Habitat

EDGE Südkreuz – DE



- 32,000 m² (GFA)
- 7 Floors
- 2 Buildings
- Communication-enhancing spaces
- Headquarters of Vattenfall









VALENTIN

GLS

Life's like happy.

Ab war für eine
für eine bessere
Welt und die
Step

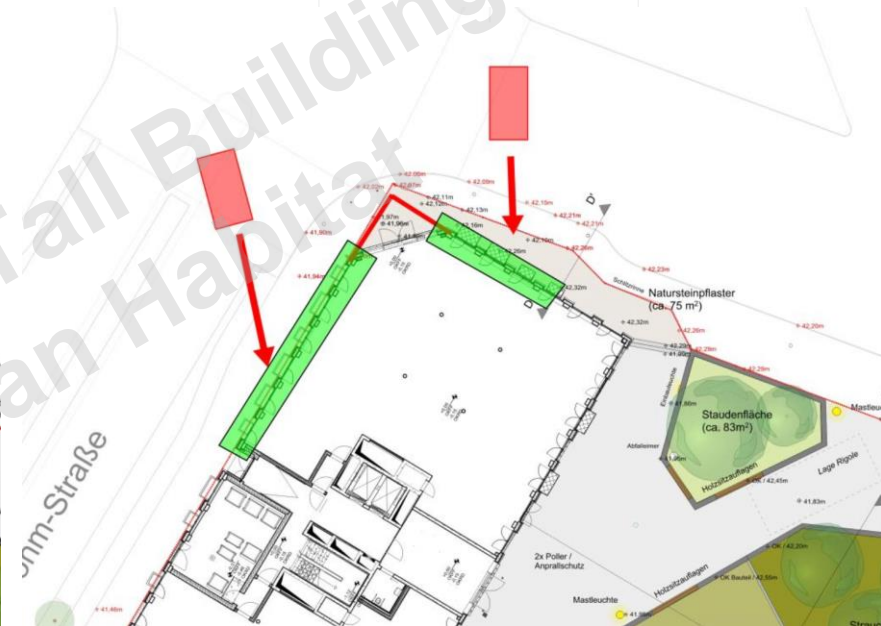
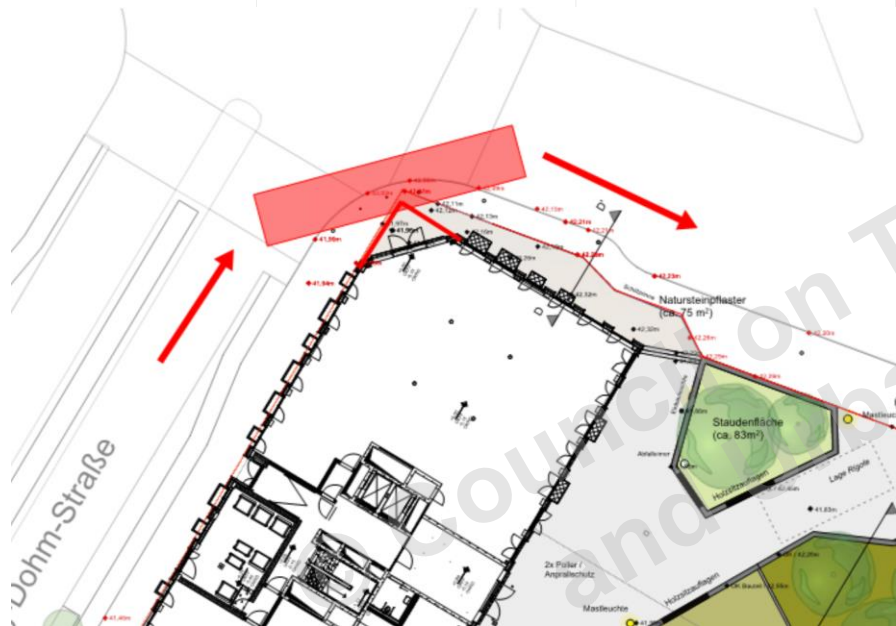


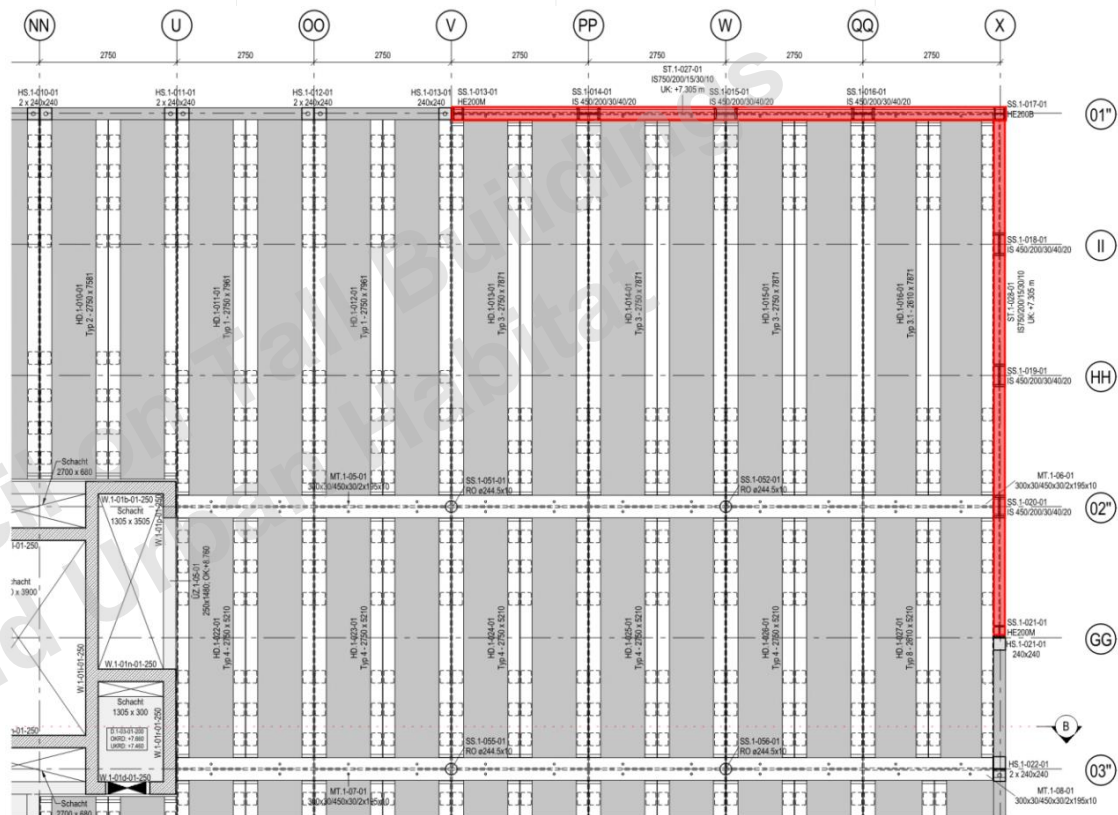
MK1

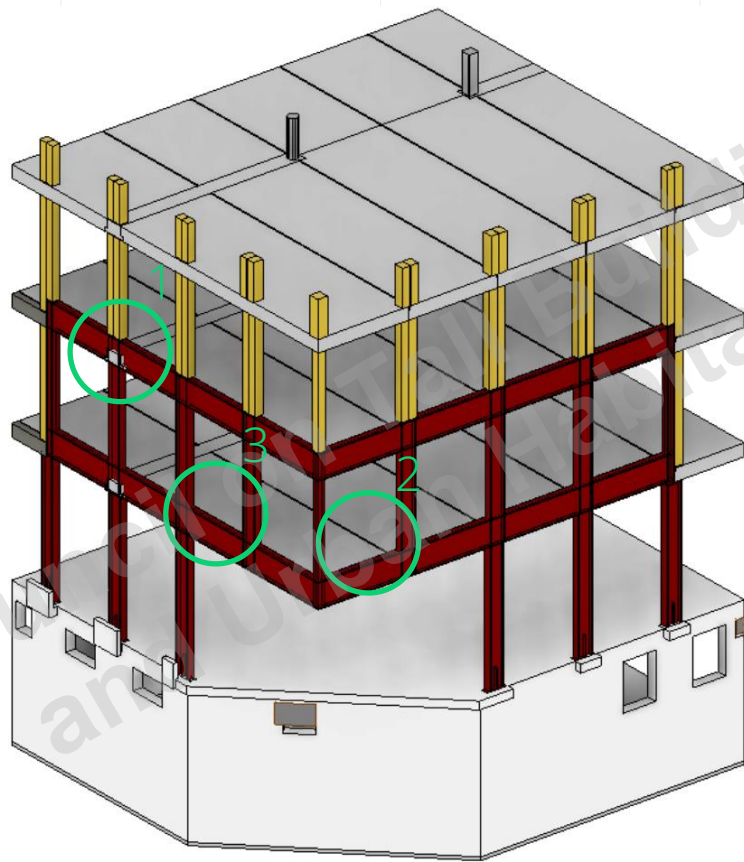
Vierendeel Truss

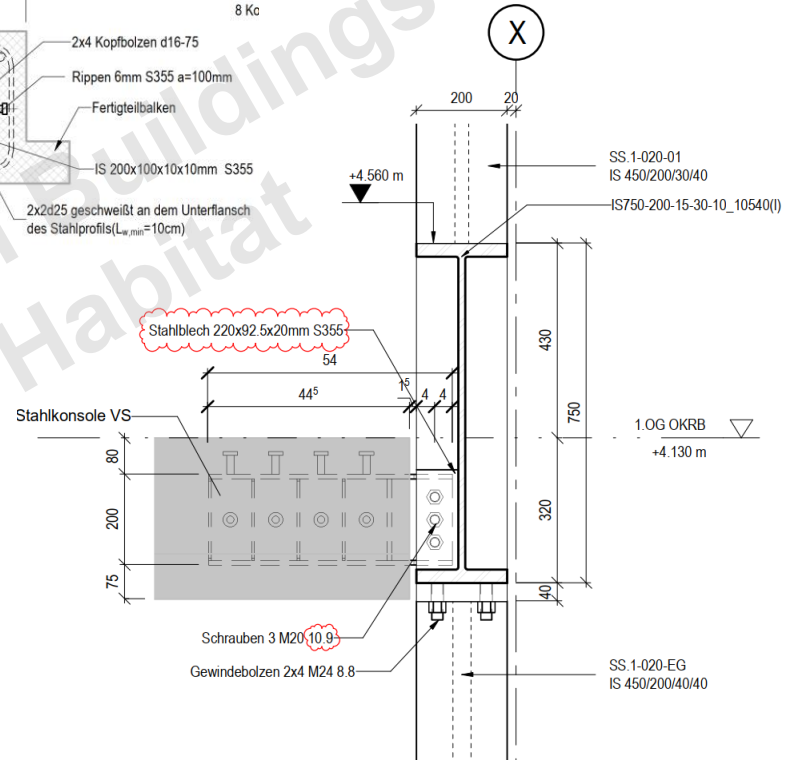
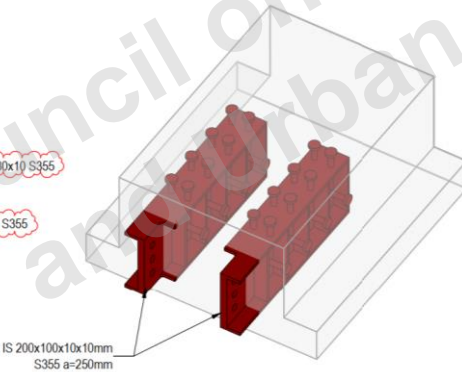
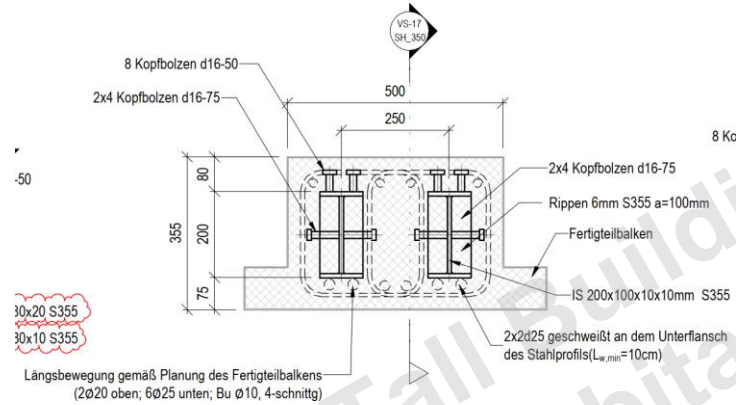
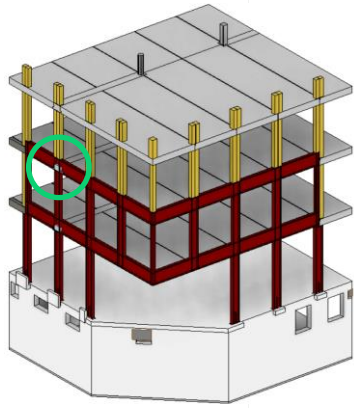




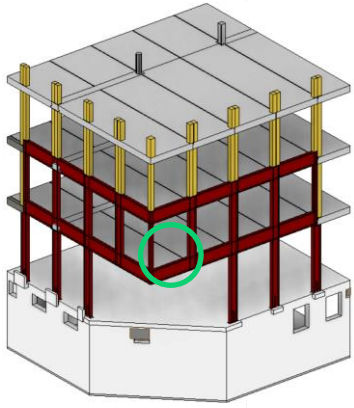




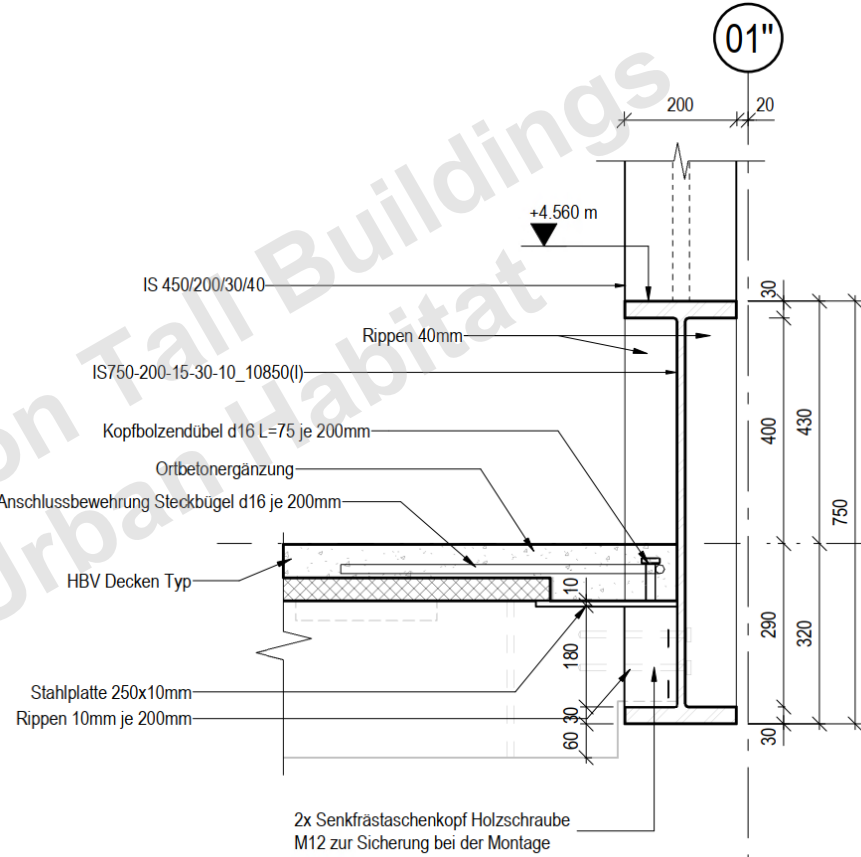


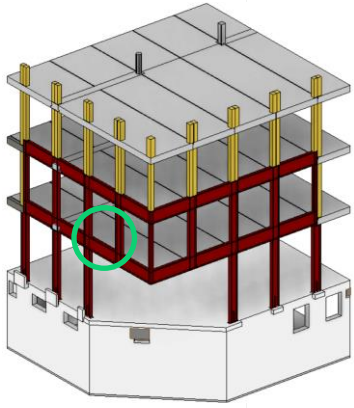


Detail 1

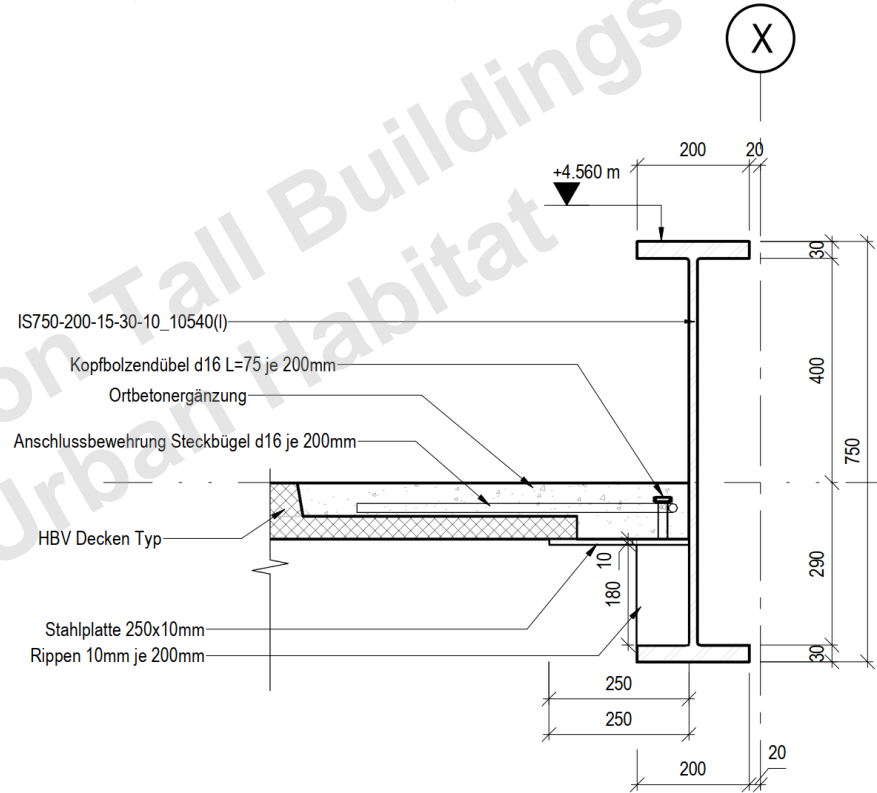


Detail 2





Detail 3









MK2

Transfer Truss Sky Lounge



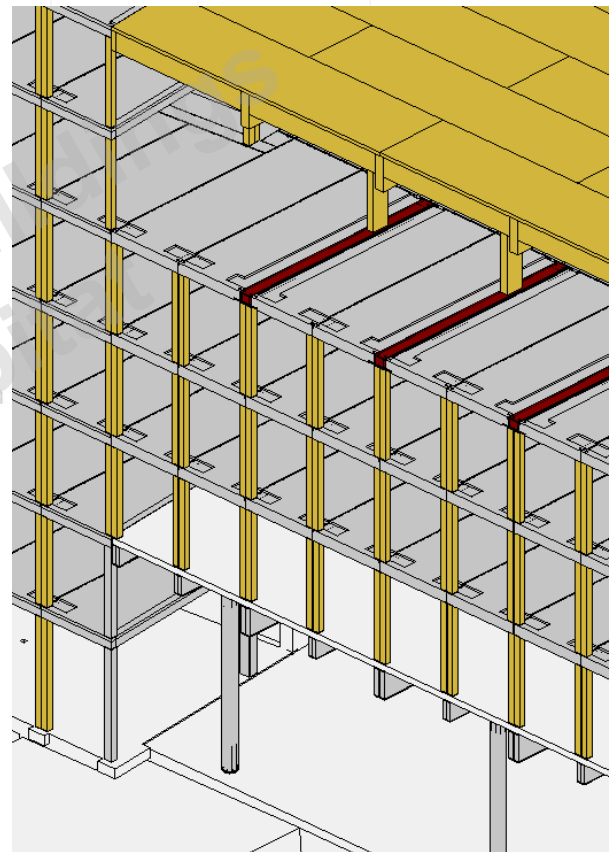
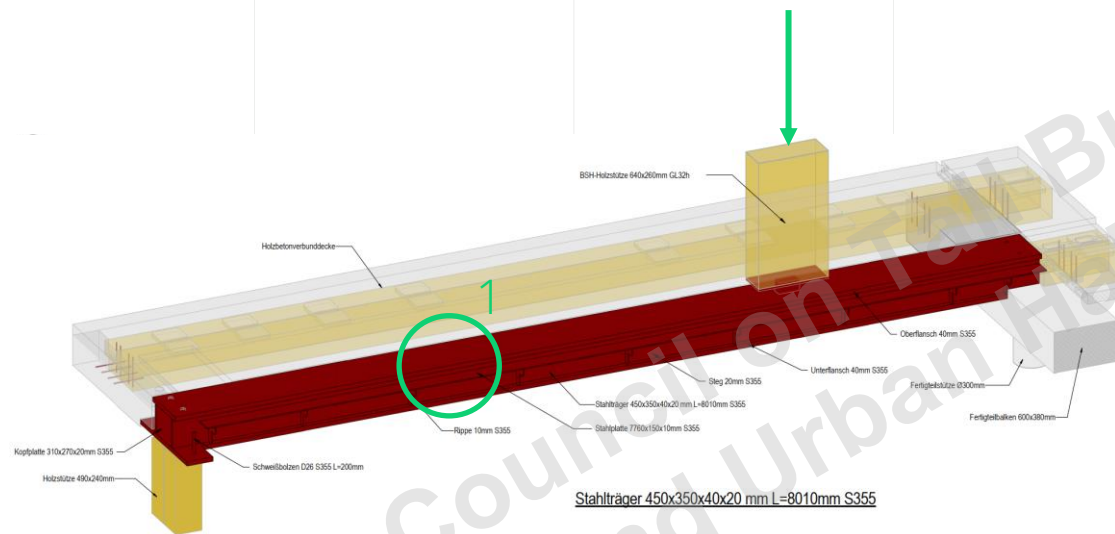


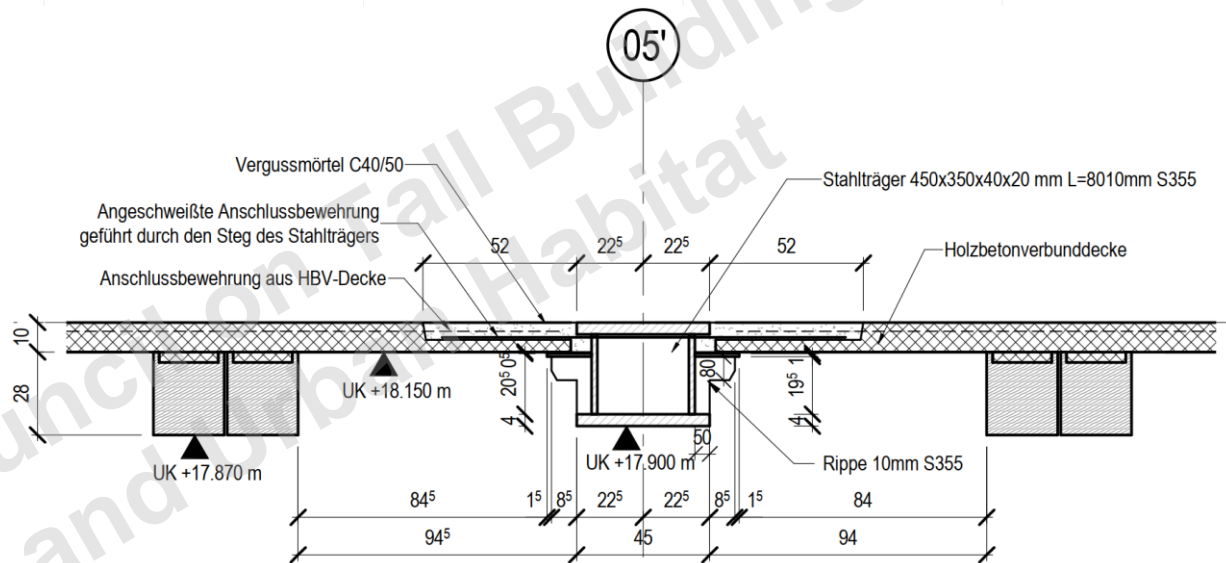
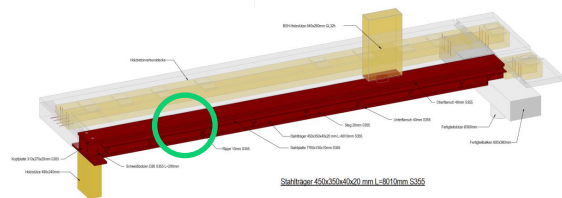
© Council on Tall Buildings
and Urban Habitat











Detail 1



Join us in the
Journey



Let's shape the future together.

TallCREE's headquarter is located in Dornbirn, Austria. Our global partner network currently extends from Europe to Asia and North America.



CREE GmbH, Färbergasse 17b
Rhombert's Fabrik, Haus L
A-6850 Dornbirn, Austria

T +43 5574 403-3190
E info@creebuildings.com

Julia Köhler

julia.koehler@creebuildings.com

+43 664 8511 619

© Council on Tall Buildings
and Urban Habitat

creebuildings.com