

Three Projects, Three Levels of Steel-Timber Hybrid Complexity

Ethan Martin

Director of Sustainability and Mass Timber, DCI Engineers



**CTBUH 2022
Steel-Timber Conference**

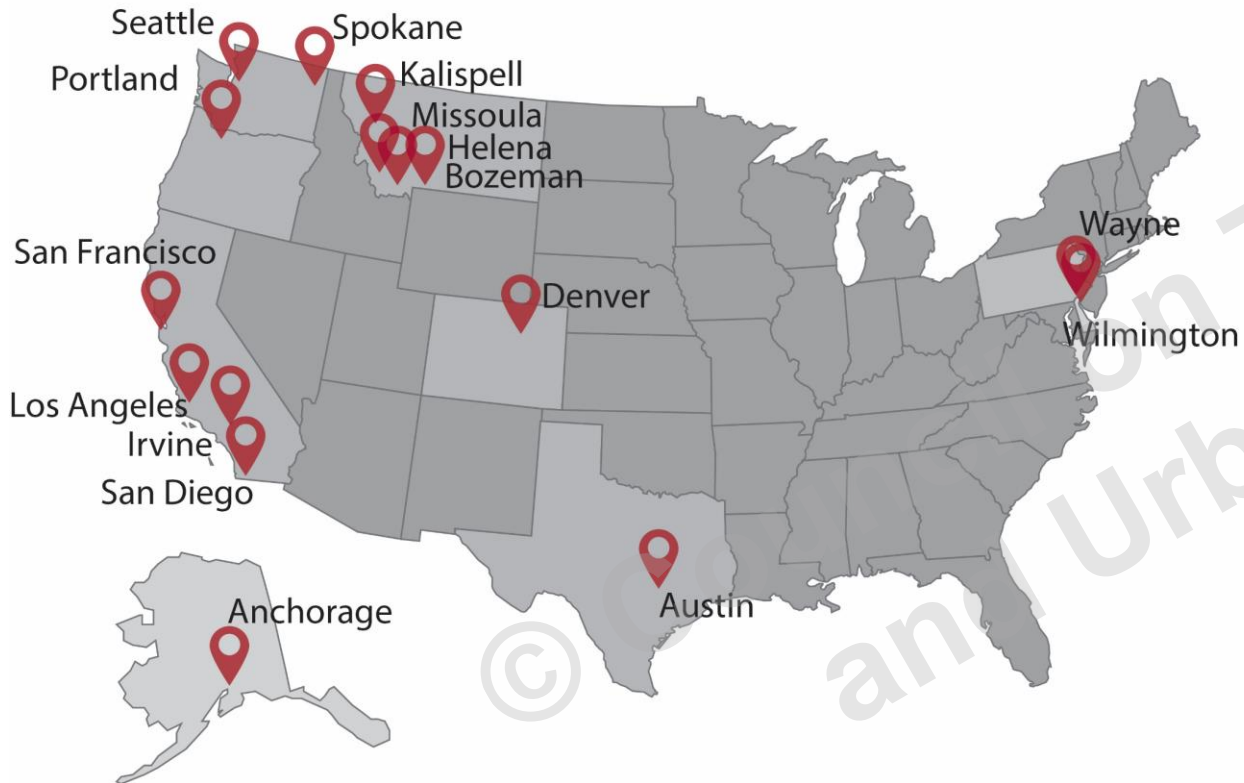


EDCI
ENGINEERS



MASS TIMBER + STEEL

WHO WE ARE



420+
employees
nationwide

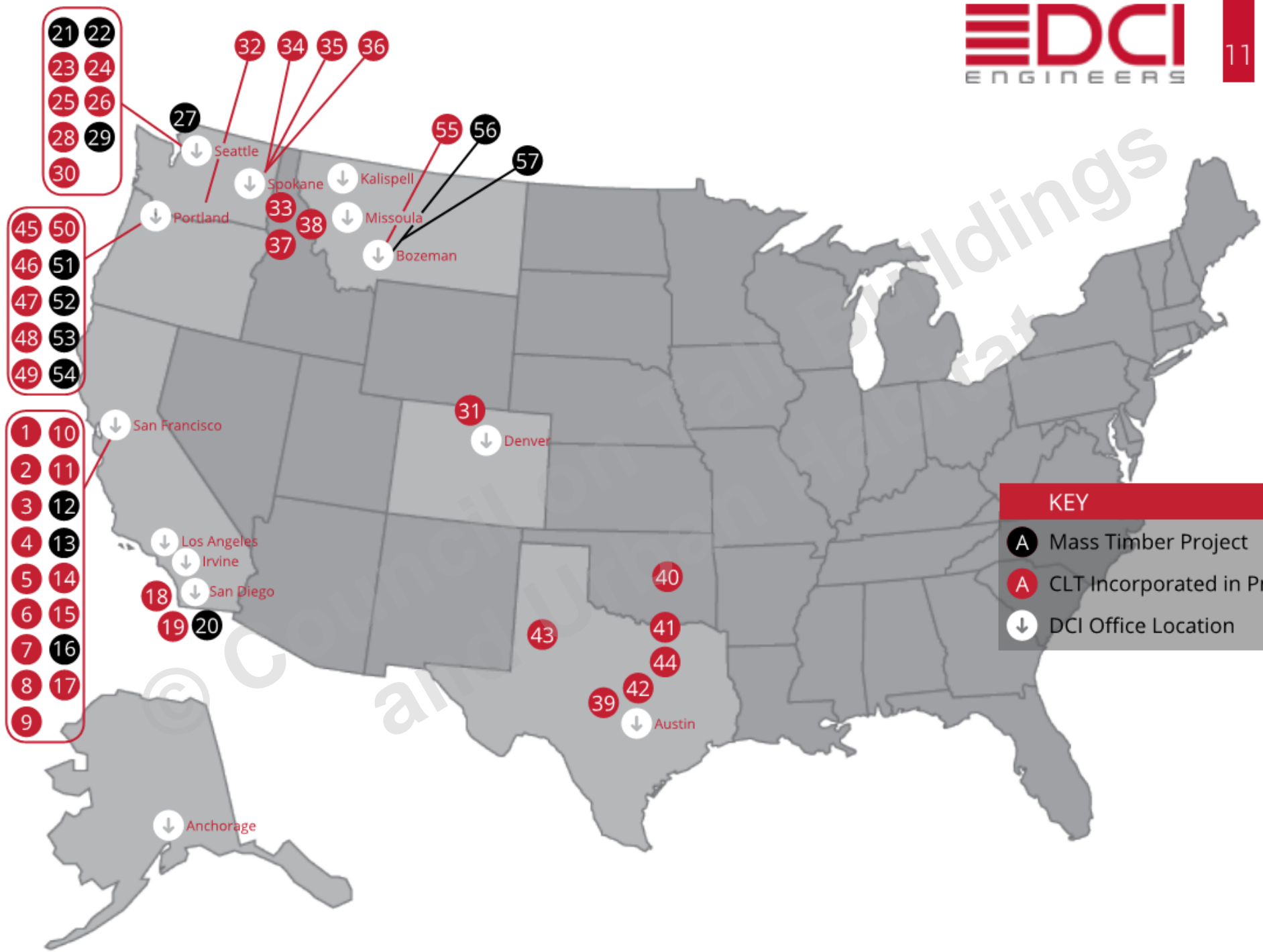
17
offices

50
States
licensed in
(+multiple
Canadian
provinces)

50
Mass timber
projects in
the U.S.

DCI ENGINEERS

DCI's fundamental philosophy is to provide **Service, Innovation, and Value** to our clients and team members.



ETHAN MARTIN, PE
DIRECTOR OF SUSTAINABILITY AND
MASS TIMBER

- Started Tall Mass Timber building in U.S. by setting up prescriptive, performance-based process at state level with a guaranteed building permit
- Helped DR Johnson become first CLT manufacturer in the U.S. for building grade CLT
- Volunteers time for rural economic development, advancing wood technologies and workforce development for several states



emartin@dc-engineers.com
Toll-free: 855.USE.WOOD
Mobile: 206.678.2086

Hybrid – use multiple materials to form the structure of the buildings

Composite – use multiple materials to form an element of the structure



ALL WOOD STRUCTURE

Photo Credit: Ethan Martin





Photo Credit: DCI Engineers

Skylight



**HYBRID STEEL AND
WOOD STRUCTURE**

Photo Credit: Ankrom Moisan Architects





Skylight



COMPOSITE STEEL AND
WOOD STRUCTURE

Photo Credit: Ankrom Moisan Architects





Photo Credit: Wakely

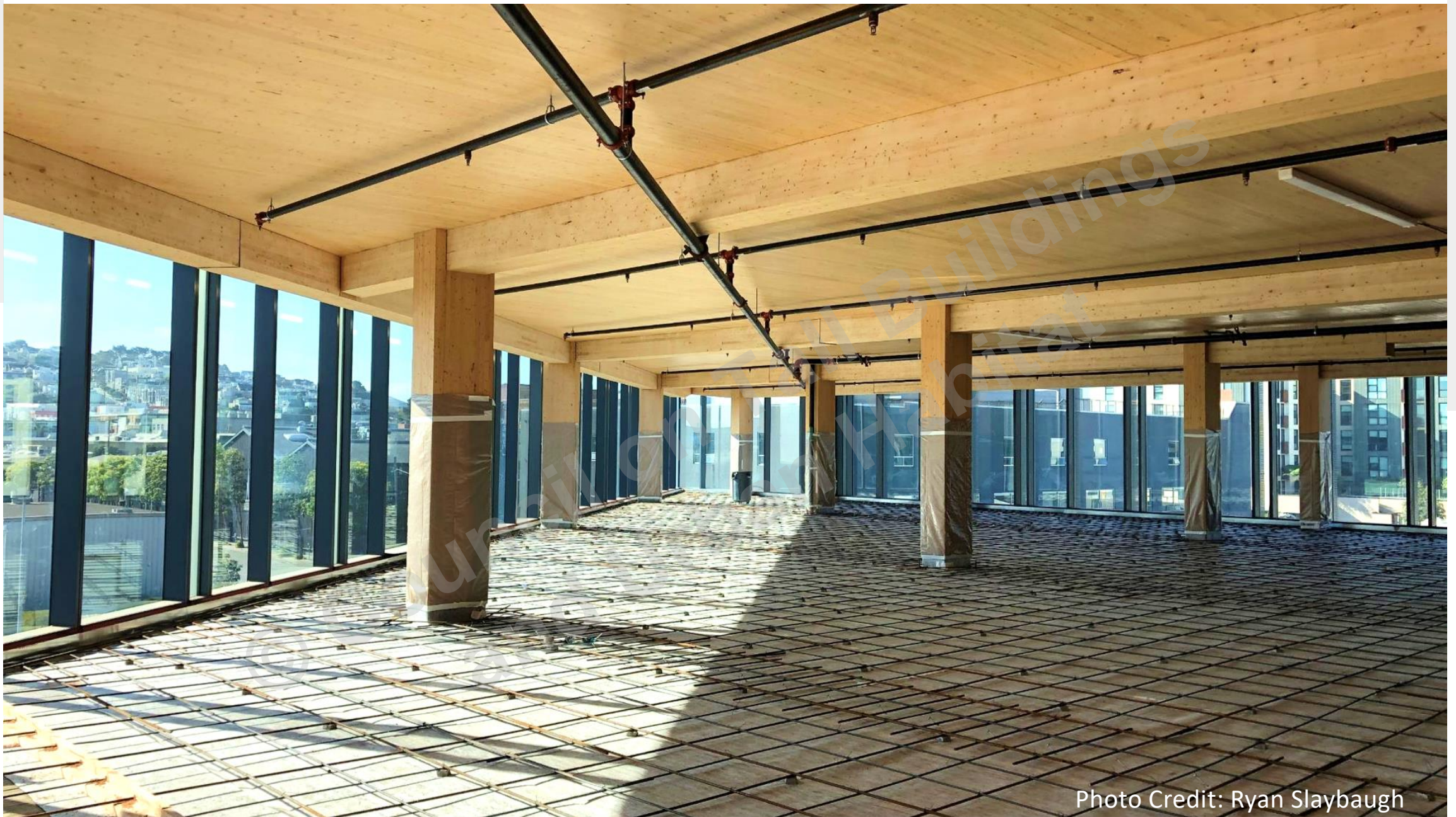


Photo Credit: Ryan Slaybaugh





Photo Credit: Quentin Lee





ETHAN MARTIN

emartin@dc-engineers.com

MOBILE: 206.678.2086

