

# Two Public Buildings, California: Using Steel and Timber to Achieve Weight Savings

**Benton Johnson**

*Principal, Skidmore, Owings & Merrill*



**CTBUH 2022  
Steel-Timber Conference**



# BJKL & COB3

Two Public Buildings, California:  
Using Steel & Timber to Achieve  
Weight Savings



SOM





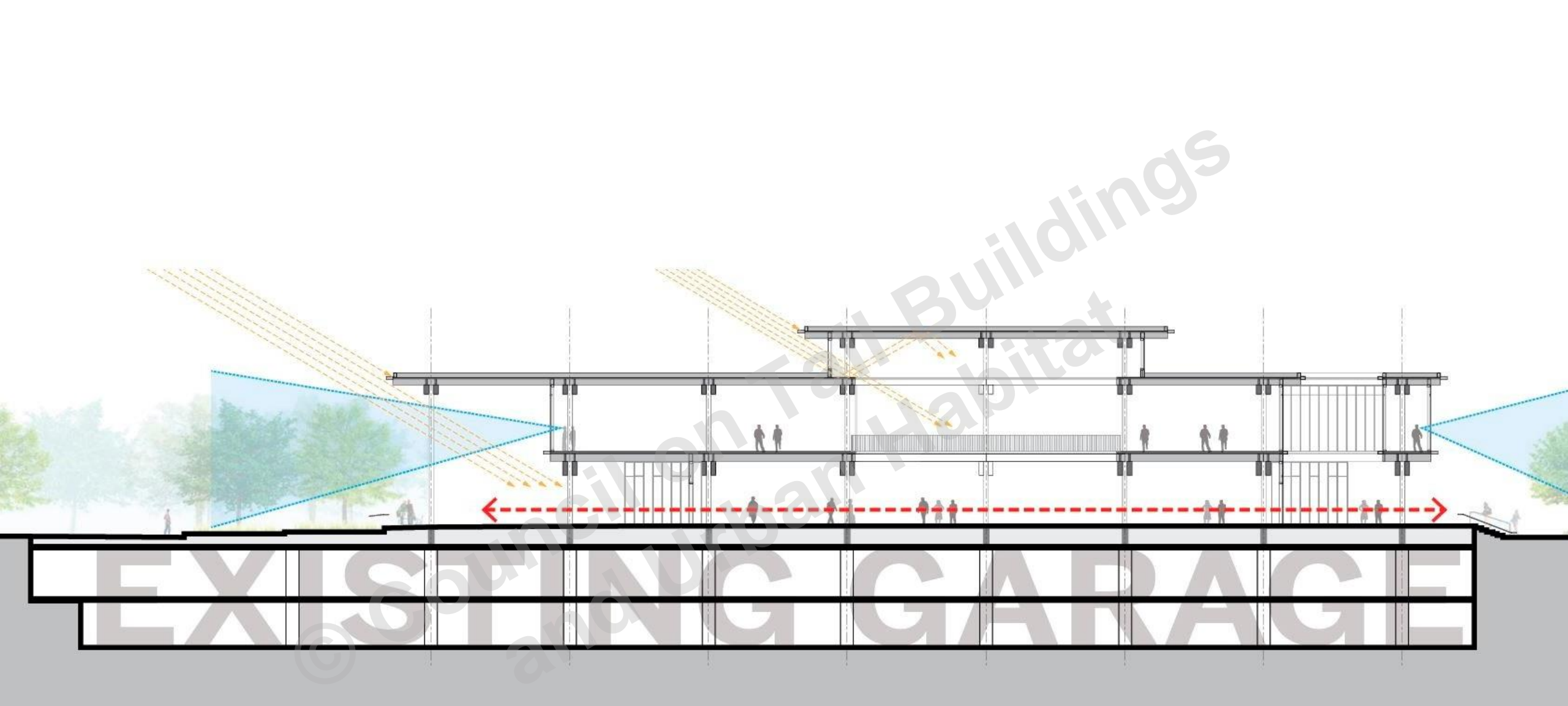
PORT HQ

CITY HALL

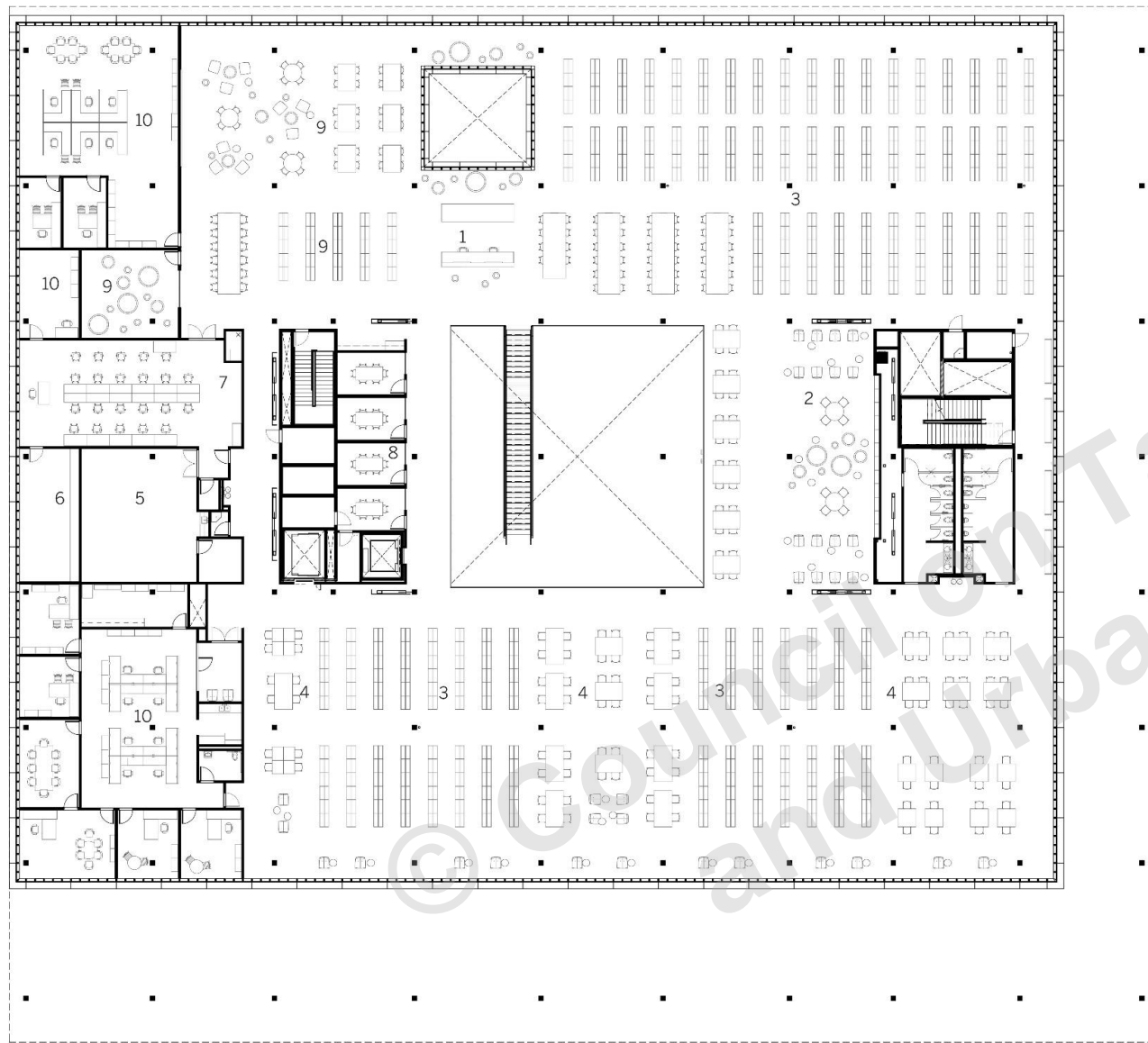
LINCOLN PARK

BJK MAIN LIBRARY









#### LEGEND

- 1 INFORMATION DESK/ COMMONS
- 2 PERIODICALS DISPLAY/ SEATING
- 3 COLLECTIONS
- 4 READING ROOM
- 5 MEDIA PRODUCTION
- 6 3D PRINTING LAB
- 7 MAKERS SPACE STUDIO
- 8 STUDY ROOMS
- 9 TEEN AREA AND COLLABORATION SPACE
- 10 ADMINISTRATIVE OFFICES AND WORKROOMS

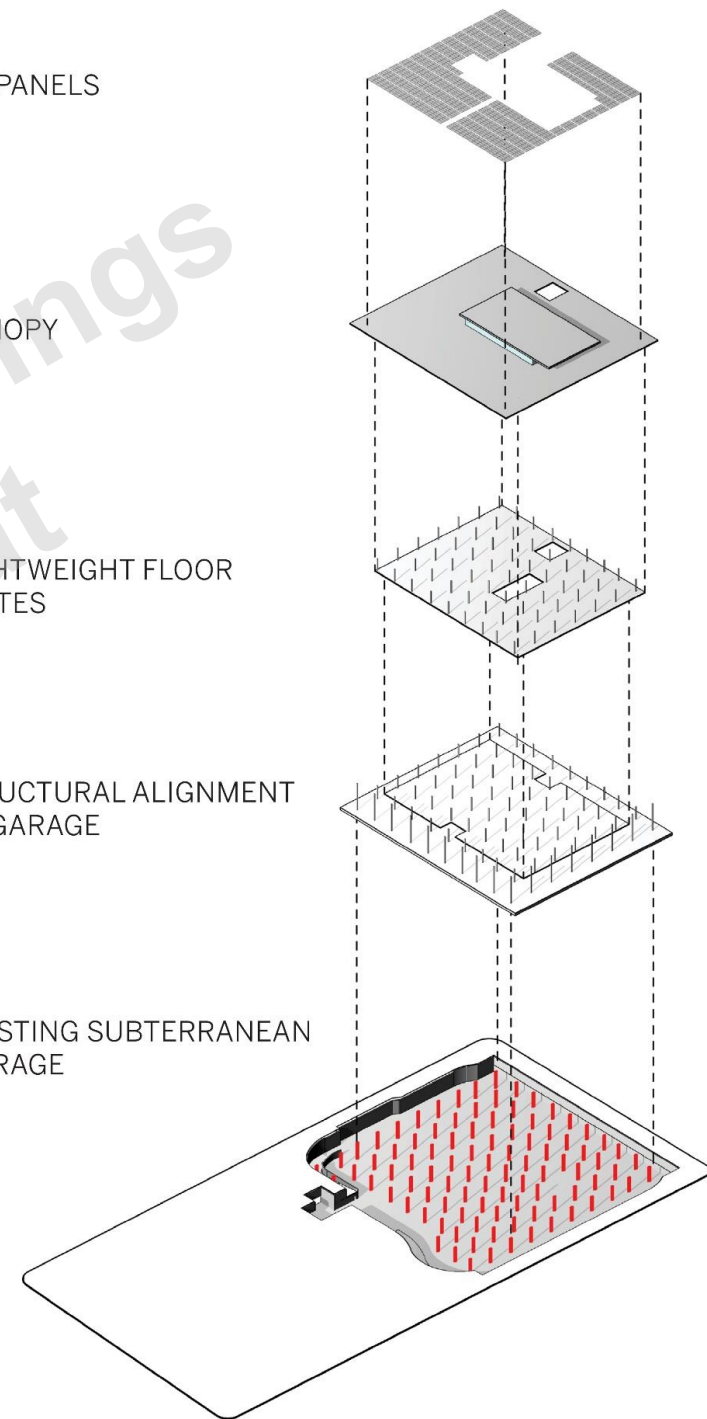
PV PANELS

CANOPY

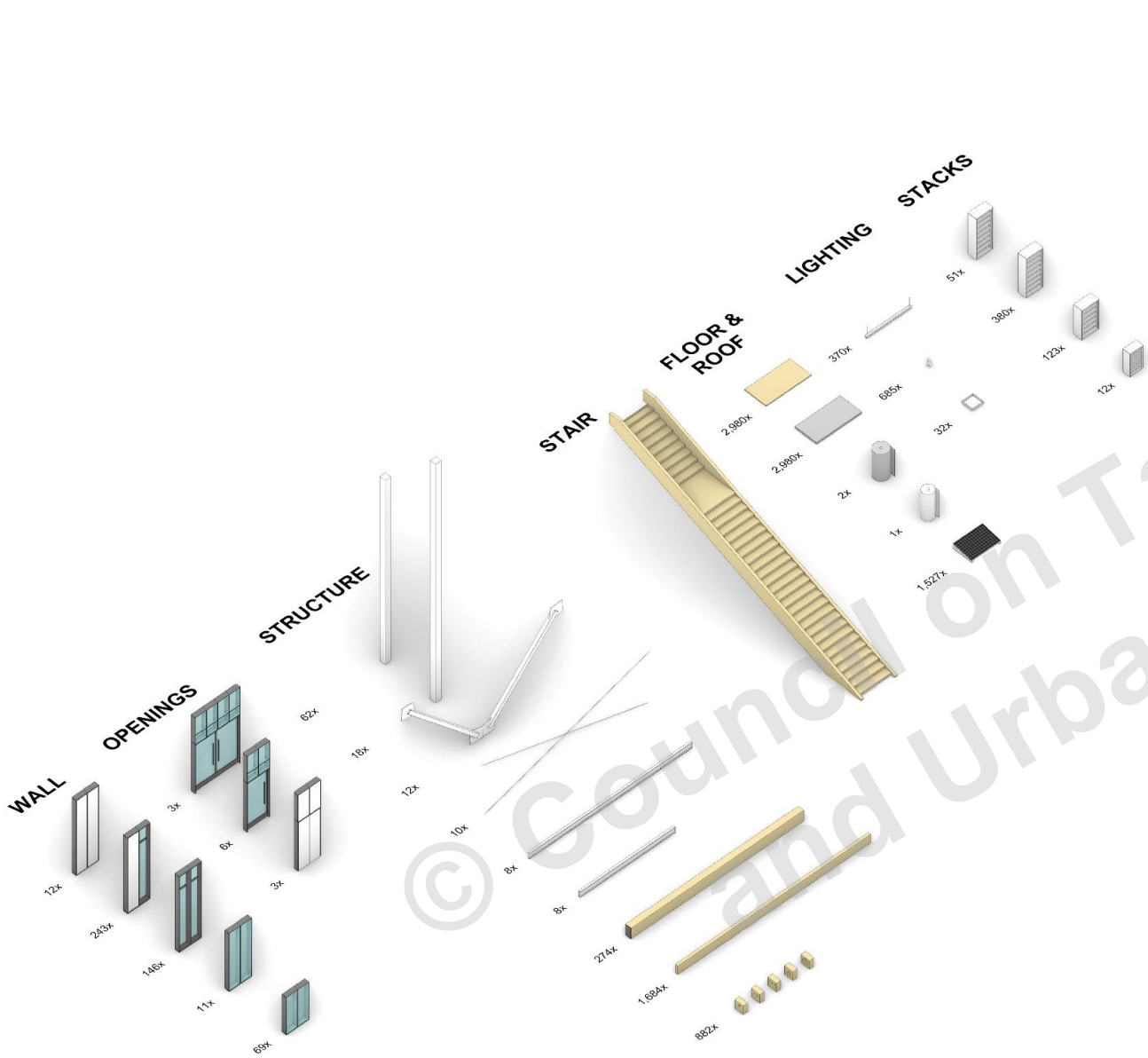
LIGHTWEIGHT FLOOR  
PLATES

STRUCTURAL ALIGNMENT  
TO GARAGE

EXISTING SUBTERRANEAN  
GARAGE







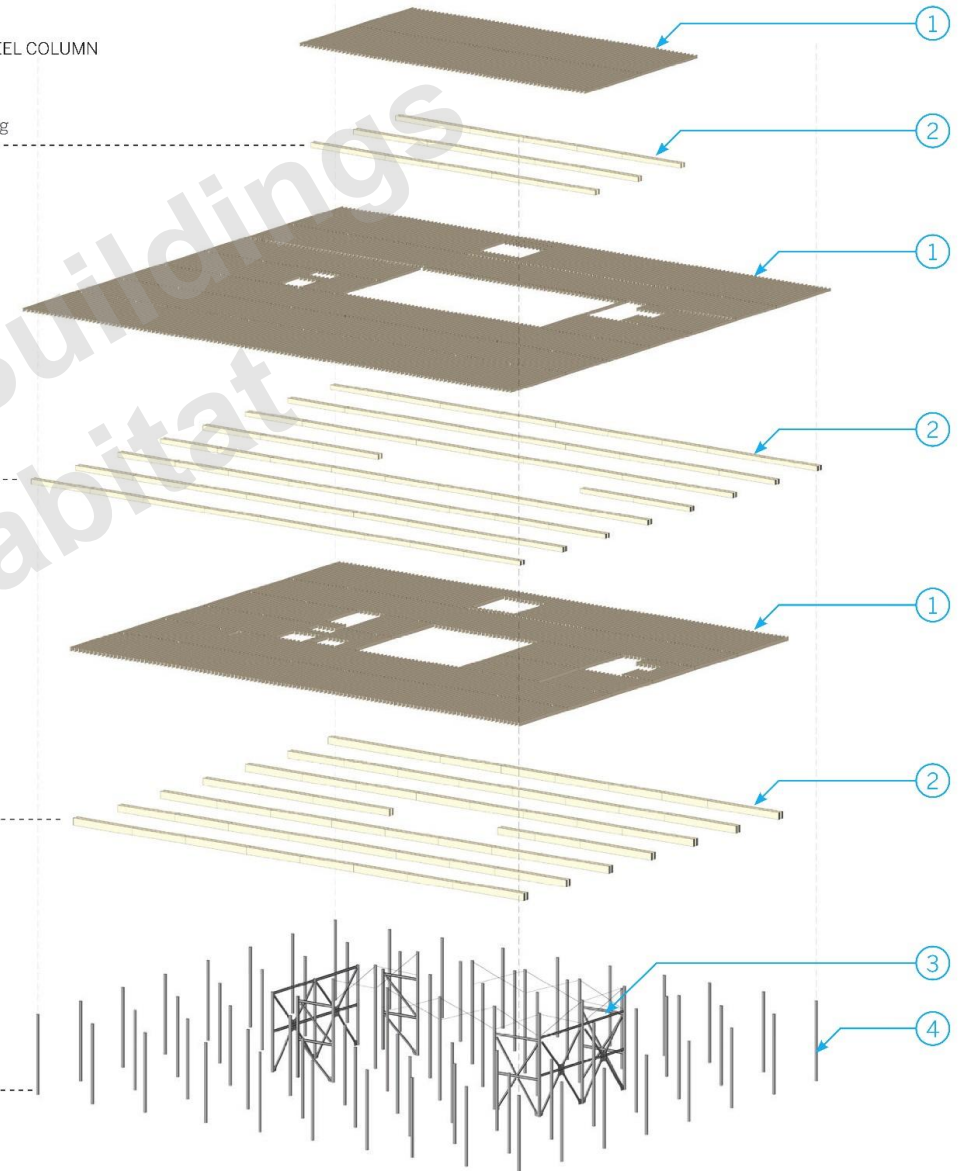
- 1 GLULAM JOISTS AT 2FT O.C. WITH PLYWOOD DECKING
- 2 DOUBLE GLULAM GIRDER
- 3 LATERAL BRACING
- 4 CONCRETE FILLED STEEL COLUMN

High roof level framing

Roof level framing

Level 2 framing

Level 1



Primary Structure Axonometric View





































Self Service

Pagdating





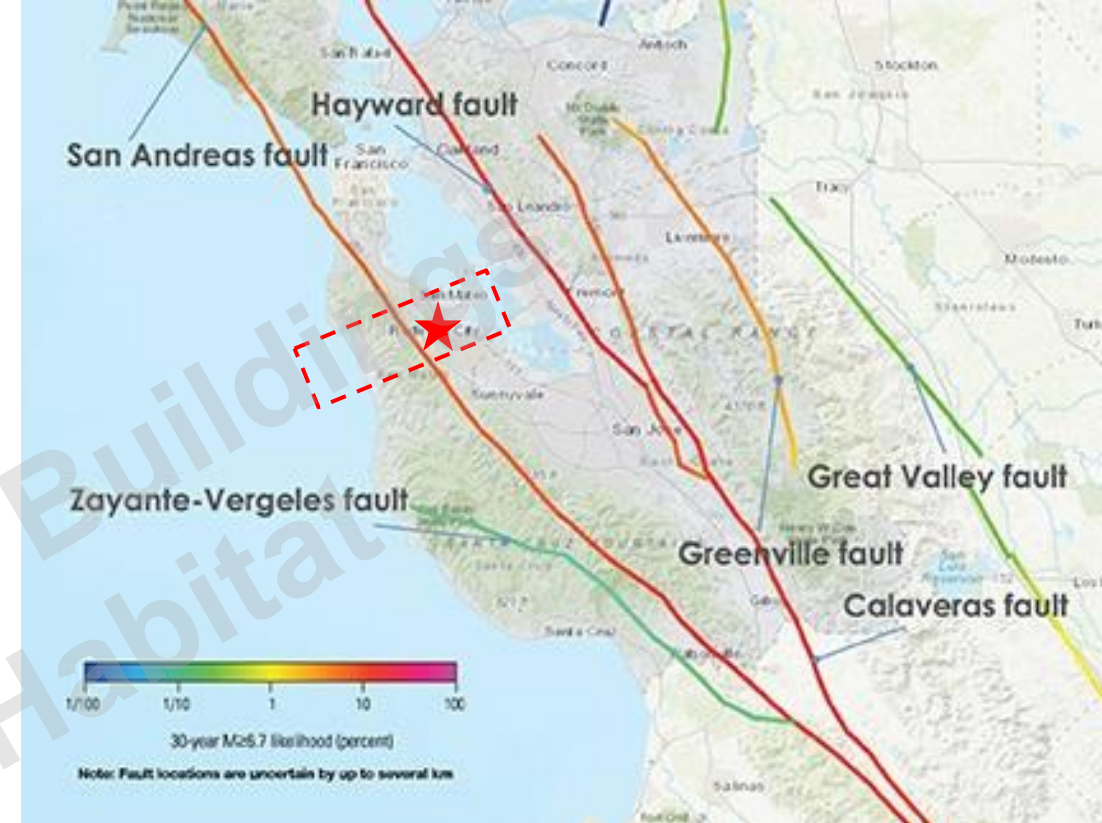
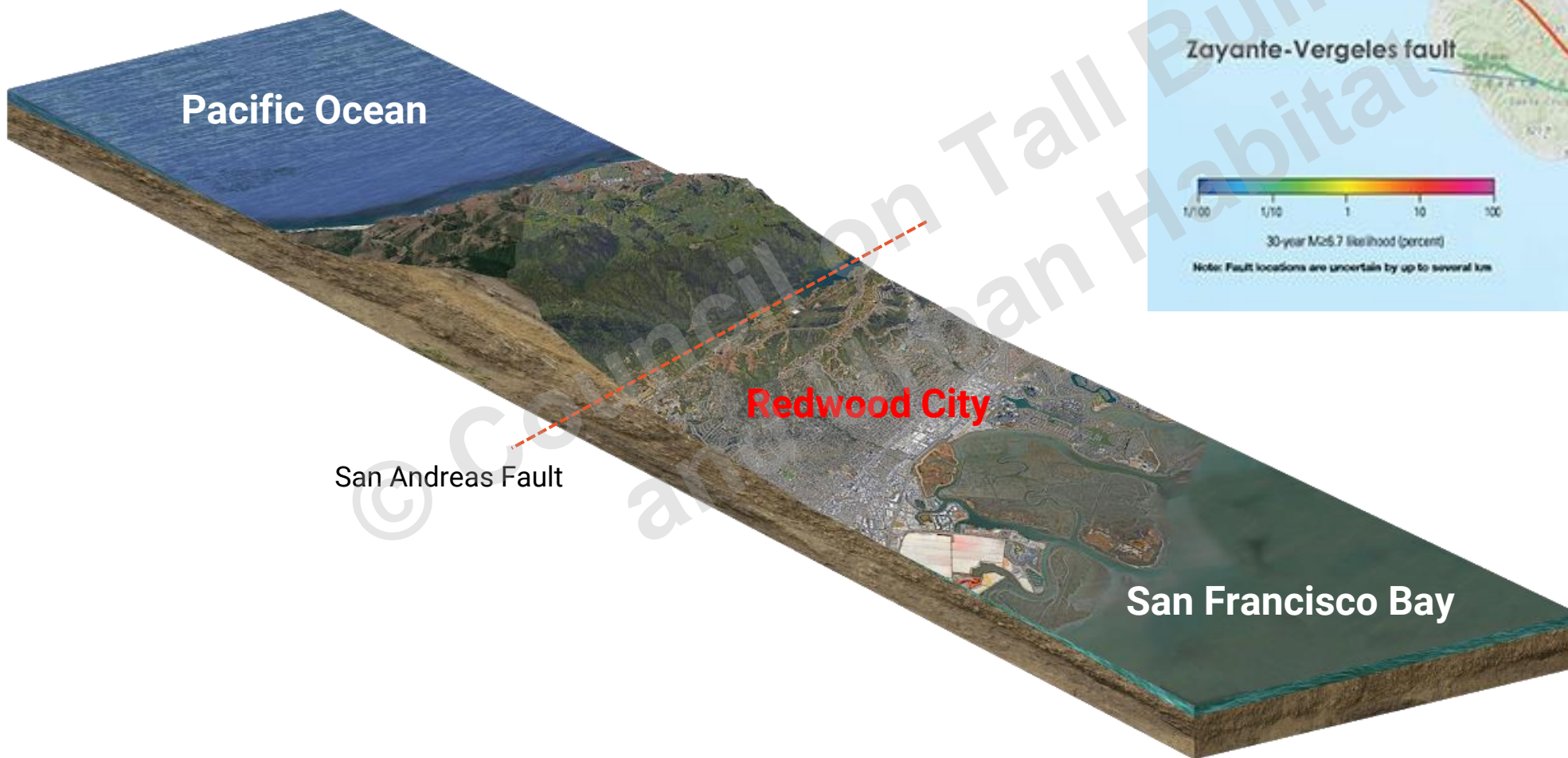


# COB3

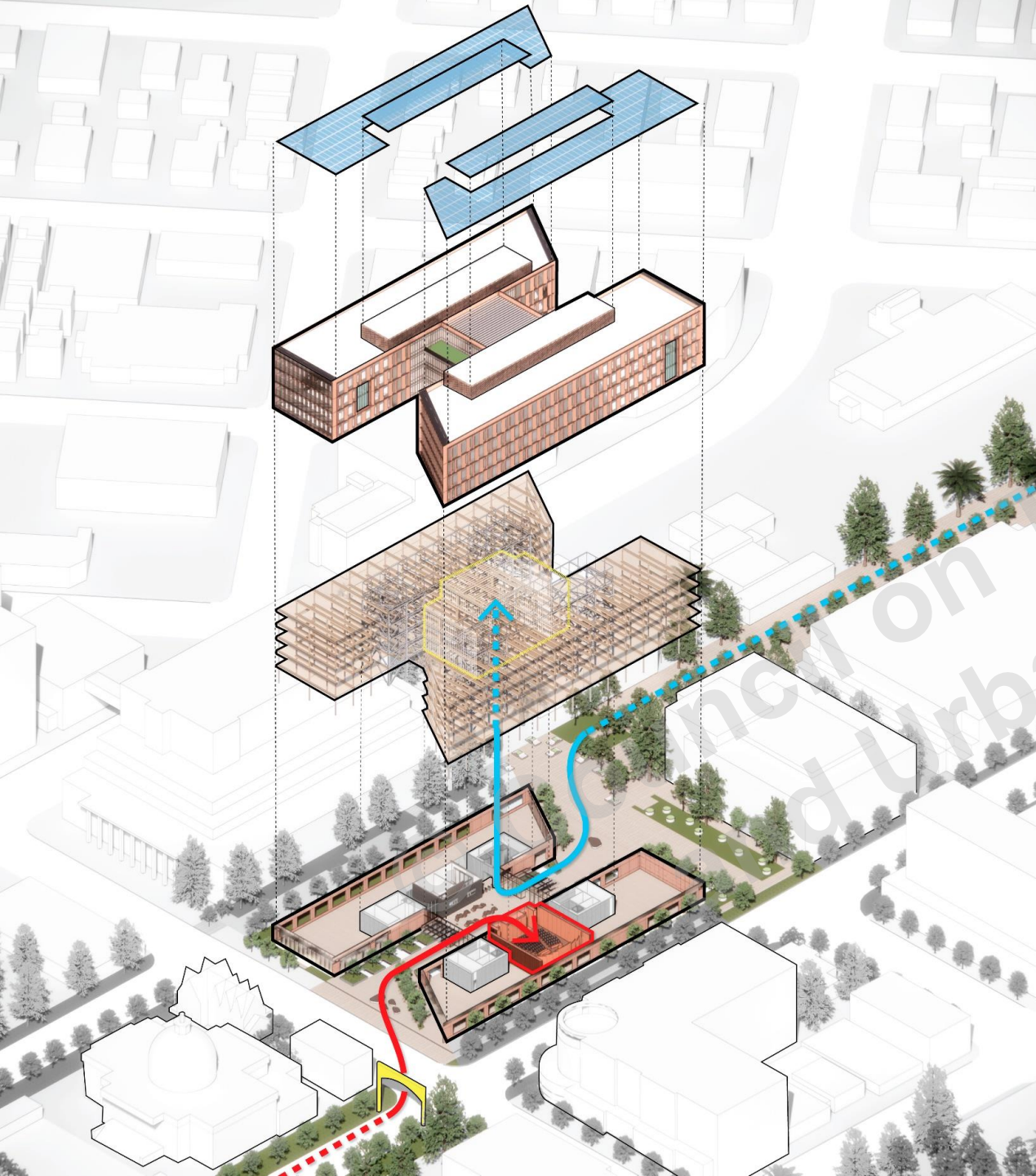
County Office Building 3  
Redwood City, CA



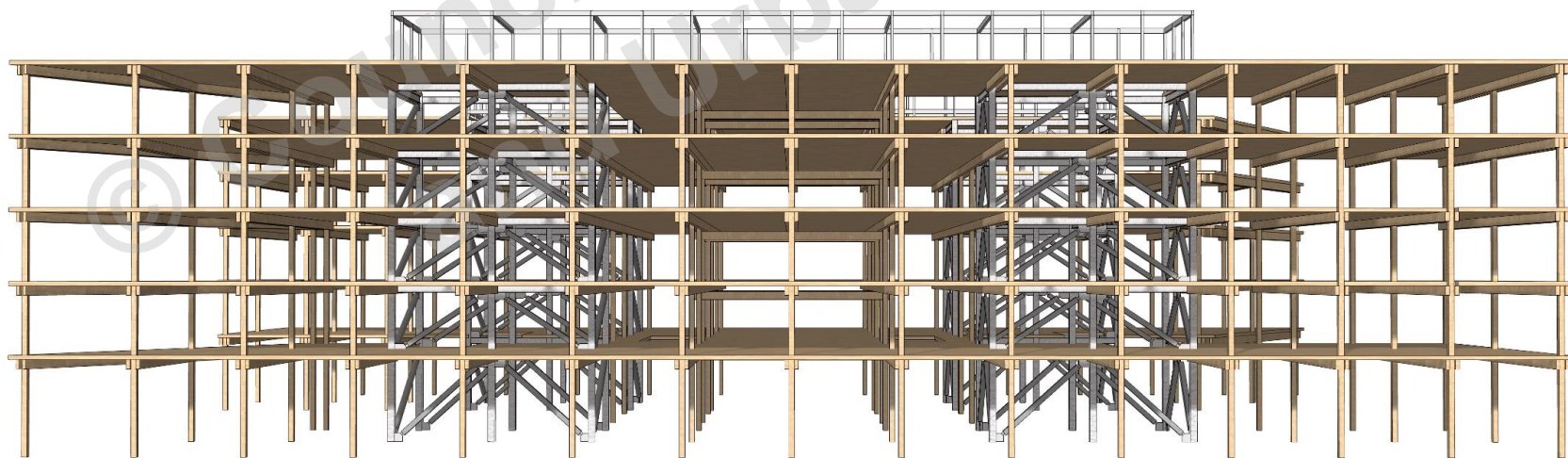
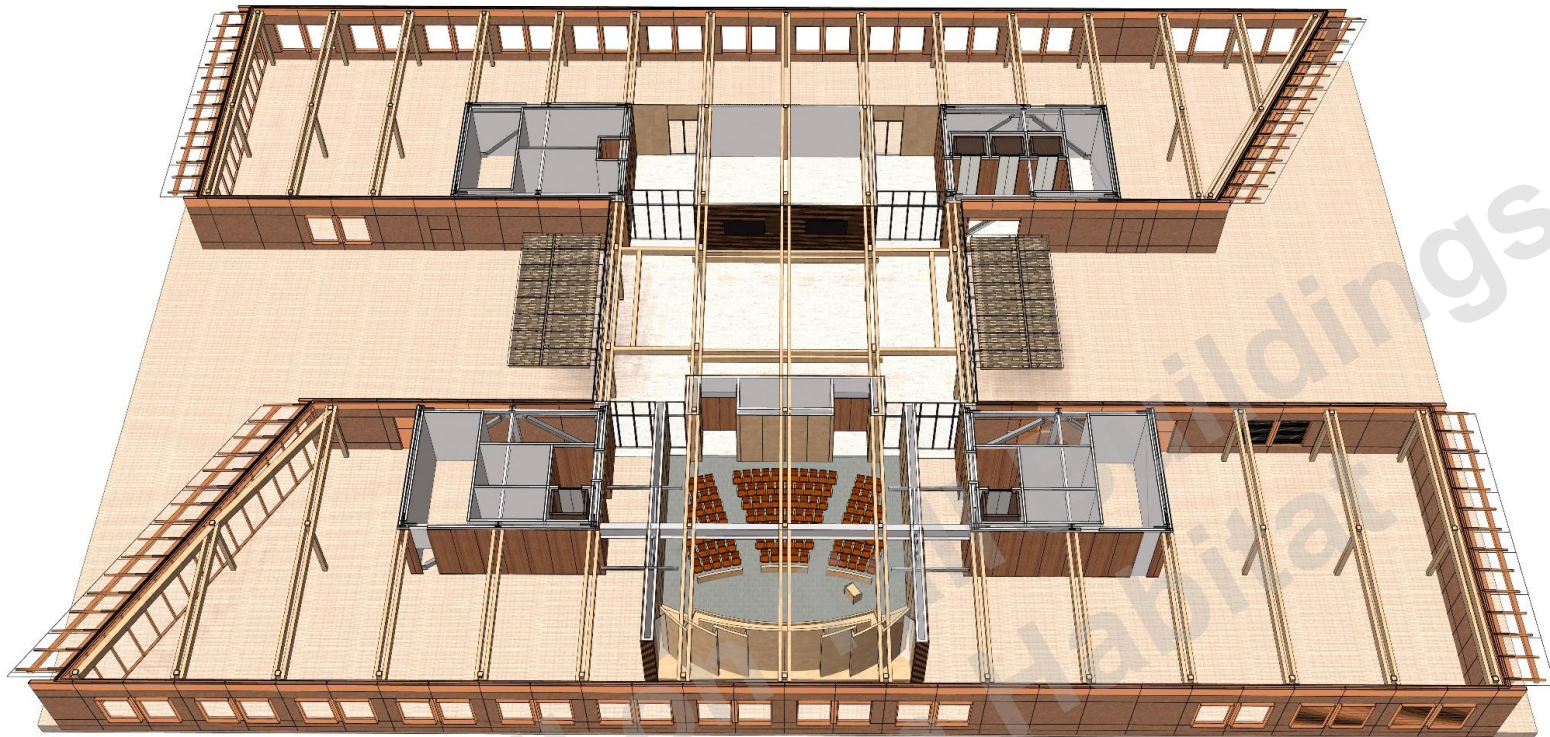




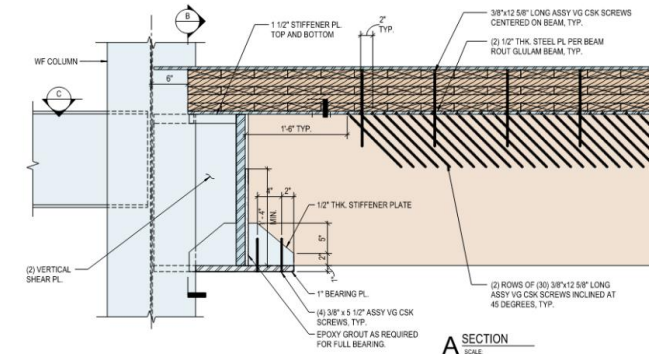
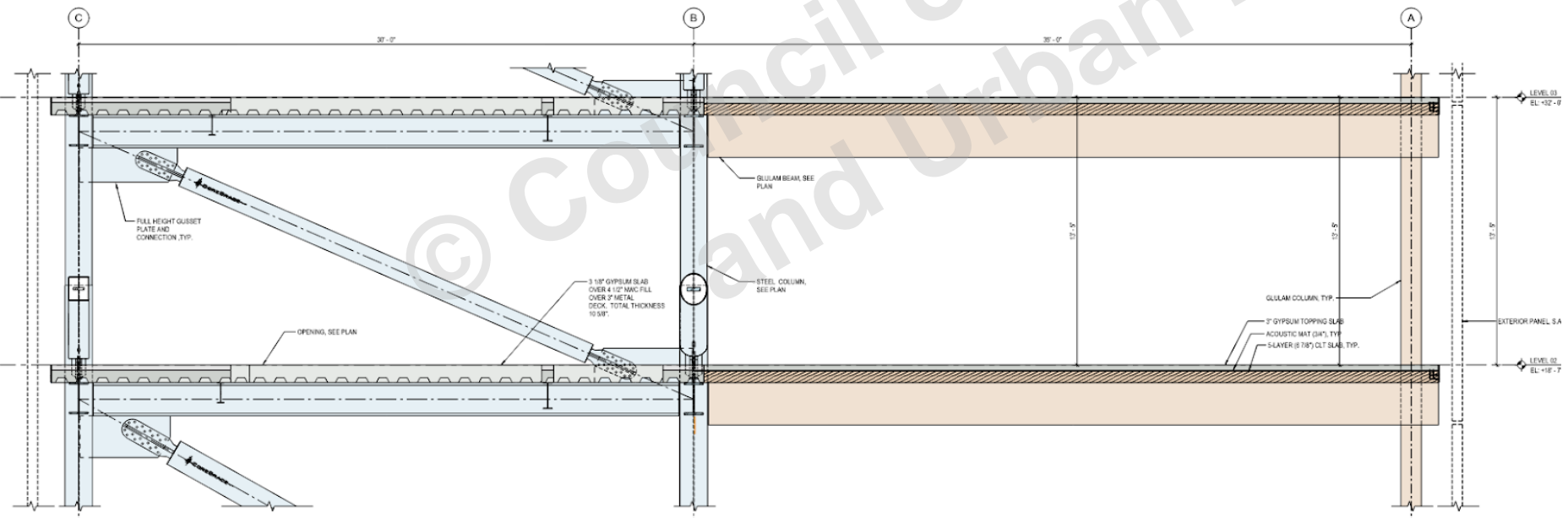
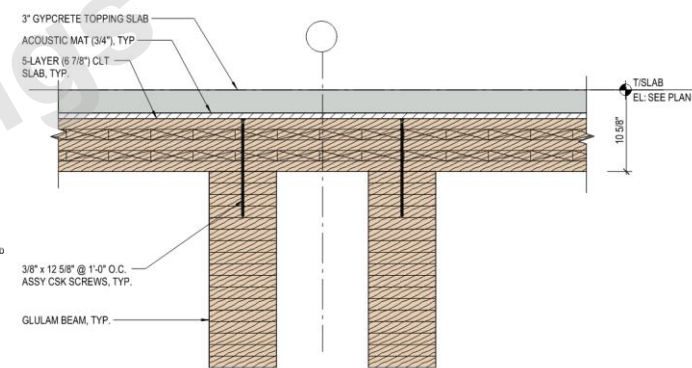
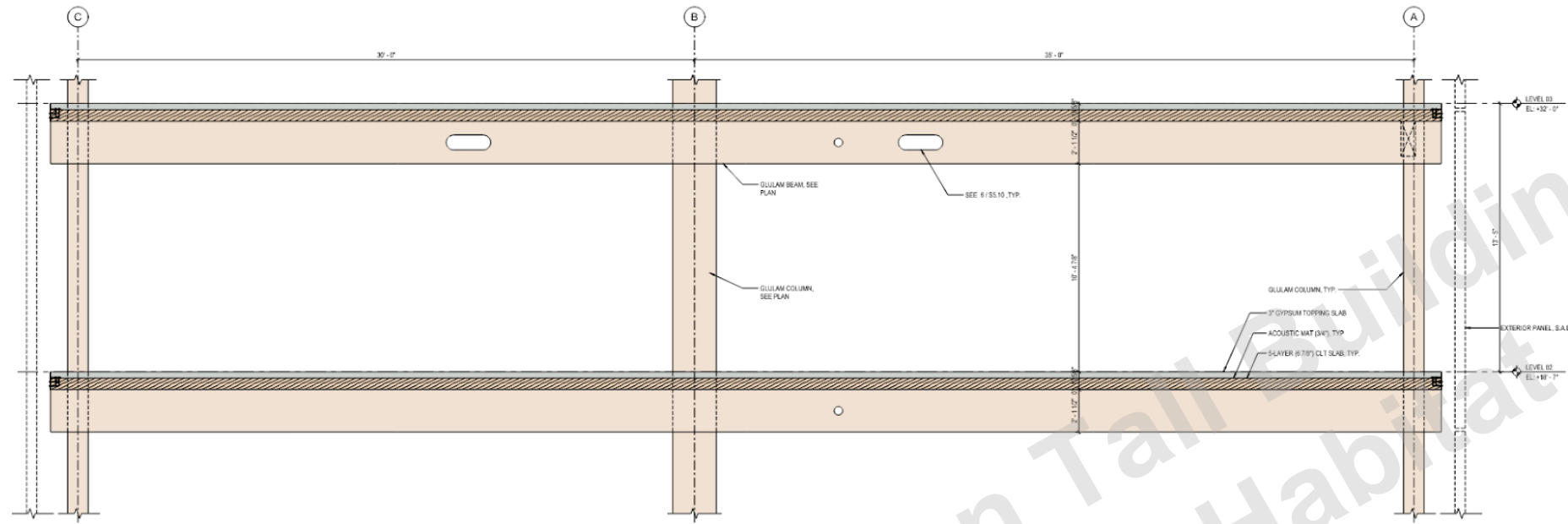












A SECTION  
SCALE































# BJKL & COB3

Two Public Buildings, California:  
Using Steel & Timber to Achieve  
Weight Savings



SOM